

APPROVED BY SENATE  
04/22/2019



---

## **Proposal to the Senate Committee on Educational Policy for the Creation of a New Unit of Research or Public Service (includes Centers and Institutes)**

### **TITLE OF PROPOSED UNIT:**

The Center on Health, Aging, and Disability (CHAD)

### **CONTACT INFORMATION:**

Jeffrey A. Woods, PhD  
Professor, Kinesiology & Community Health  
Director, Center on Health, Aging and Disability  
Associate Dean for Research, College of Applied Health Sciences  
University of Illinois @ Urbana-Champaign  
1008B Khan Annex, Huff Hall, MC-586  
1206 South Fourth Street  
Champaign, IL 61820  
217-244-8815  
[Woods1@illinois.edu](mailto:Woods1@illinois.edu)

### **PROPOSED STATUS:**

This proposal is for moving the Center on Health, Aging, and Disability (CHAD) within the College of Applied Health Sciences (AHS) from temporary (Phase 1) to permanent (Phase 2) status. As the Center has existed since 2006 as a temporary Center, the fact that it has grown and that it still serves AHS effectively gives us full confidence to move the Center from temporary to permanent status under the auspices of the UIUC campus and state of Illinois.

### **DESCRIPTION OF THE CHARTER:**

- Population demographics are such that the number of older adults are increasing rapidly. This, coupled with the increase in chronic disease and disability, requires an academic response to the ever-growing healthcare and societal implications

associated with this demographic shift. CHAD's role is to provide support for research, education, and community outreach for the College of Applied Health Sciences and our campus and external collaborators.

- CHAD is a catalyst and infrastructure support unit for innovative translational and applied social and behavioral research, education, and outreach efforts addressing the many facets of health, wellness, aging, disability, and quality of life
- CHAD's mission aligns well with all the units in AHS including Kinesiology and Community Health; Recreation, Sport, and Tourism; Speech and Hearing Science; The Chez Center for Wounded Veterans in Higher Education; and the Disability Resources and Educational Services. Within the campus context, CHAD works with the Health Care Engineering Systems Center, Illinois Health Science Institute, the Beckman Institute for Advanced Science and Technology, U of I Extension, the ACES Office of Research, Research Data Service and other entities to foster visibility for interdisciplinary work in health, aging, and disability research, education, and outreach. CHAD collaborated with the College of Engineering in championing health technology research, education, and outreach and was instrumental in advocating for health technology inclusion in the Health Sciences Strategic Task Force report as a crosscutting theme.
- We are requesting permanent Center status on the University of Illinois at Urbana-Champaign campus as an embedded Center within the College of Applied Health Sciences
- Current research, education, and outreach themes include: health, technology, and aging; Age-Friendly Champaign-Urbana; digital information accessibility; health and the built environment; independent living and full participation of older adults and persons with disabilities; health equity and quality of life; health and wellness across the lifespan. Our public outreach effort, Age-Friendly Champaign-Urbana, is an excellent example of community engagement for mutual benefit of the external stakeholders and our campus. Our focus on aging and disability aligns well with societal and campus grand challenges. CHAD is poised to contribute its expertise and partnerships for campus benefit.

## **History and Mission**

The Center on Health, Aging, and Disability (CHAD) was formed within the College of Applied Health Sciences in 2006 to support the growth and development of research on health, aging, and disability and to develop the infrastructure necessary to support interdisciplinary collaborations across the departments in the College of Applied Health Sciences, across our campus and externally. The request was sent to and reviewed by the Office of the Provost. The request was forwarded to the Illinois Board of Higher Education for Authorization for Reasonable & Moderate Extension – Temporary Approval of Center / Institute with an Assigned CIP Code: 90-3099. Temporary approval was granted on May 12, 2006. We are currently submitting for permanent status for the Center. The delay in the application for permanent status beyond the typical 3-5 year period was due to a transition in leadership within the Center and the College. This application rectifies the situation, documenting the sustainability and utility of the Center.

The Center on Health, Aging, and Disability within the College of Applied Health Sciences (AHS) serves as a campus, state, national, and international resource for the integration and advancement of knowledge in these distinct but interrelated topics – health, aging, and disability. More information can be found at <http://chad.illinois.edu/>. All faculty in AHS are Full Members. Faculty in other UIUC units can apply for Affiliate Member status (see below).

CHAD supports the research, education, and outreach missions of the College of AHS and the University through addressing the many facets of health, wellness, aging, disability, and quality of life through a variety of strategies and services. We support the development of innovative research through our pre-award grant and contract proposal services. CHAD also contributes to the training mission of the University, providing outreach and internship programs that enhances the quality of educational experiences on campus related to health, aging, and disability and better prepare our undergraduate and graduate students to serve the growing population of at-risk children and adolescents, older adults, and persons with disabilities.

### **Research Goals**

The Center's research goals are to promote and support research in the area of health, aging, and disability. The two-fold *research* mission of the Center is to support existing faculty-driven research, while also developing and supporting new research themes, in health, aging, and disability.

We provide research support services for AHS faculty, students, and their campus and external colleagues. Our current staff consists of a Director (Jeff Woods), an Associate Director (Jake Sosnoff), a Proposal and Community Outreach Specialist (Wendy Bartlo), a Biostatistician (Sa Shen), and a Grant Proposal Specialist (Heidi Krahling). In addition to leadership, supervision, and direction, the Director provides support by keeping informed of campus, federal, and private research support and opportunities and communicating these to faculty and students; assisting faculty in developing interdisciplinary teams; and guiding and mentoring faculty and students relative to professional development, scholarship, and proposal development. The portfolio of the Associate Director includes assistance with industry relations, navigating intellectual property and technology management issues, while also providing leadership to Veterans health and movement disorders research support and direction. Our proposal development team including our Proposal and Community Outreach Specialist and Grant Proposal Specialist provide support by assisting faculty with grant proposal development, writing of non-technical sections, budgets and budget justifications, and liaising with sponsor officials, co-investigators, and sub-awardees regarding proposal documents. Our Biostatistician assists faculty and students with quantitative statistical analyses for grant proposals and journal manuscripts, as well as providing bio-statistical effort of grants.

In 2017, CHAD developed and instituted its first research theme called Collaborations in Health, Aging, Research, and Technology (CHART). Directed by Professor Wendy Rogers, CHART's goals are to enable successful aging through fundamental research; advanced

technology development; education of researchers, developers, health professionals, and older adults; and guide policy decision-making, with the goal of positively affect lives of older adults. We plan to add more strategic themes in the future as resources allow.

### **Educational Goals**

CHAD's educational goals are to promote the training of faculty and students in the areas of health, aging, and disability as well as make our external stakeholders aware of our campus strengths in this area. CHAD has established a successful undergraduate internship program and hosted a number of interns who have worked to serve both our research and outreach missions. Throughout the academic year, we host of series of seminars for faculty on a variety of research and career development topics. We also host an annual CHAD Symposium dedicated to cutting-edge research and community outreach that acts as an educational opportunity for faculty and students. We are in our second year of a newly developed seminar series for AHS faculty new to AHS and the University of Illinois, led by Emeritus Professor Eddie McAuley. The series, entitled COMPASS, serves to provide new faculty with a roadmap to navigating a successful career in research, teaching, and service.

Additionally, we work to identify and coordinate educational opportunities with community partners and provide educational outreach in the community. In the past, we have hosted educational programming for local park districts, organizations that serve older adults, and we have collaborated with University of Illinois Extension Services for a webinar for elected officials and government employees across the state.

### **Outreach Goals**

CHAD's outreach goals include being a local and national voice in the areas of aging and disability. Since 2016, CHAD has served as the logistical home and provided support for Age-Friendly Champaign-Urbana. This community led initiative seeks to make our community more livable for residents of all ages. In March of 2017 CHAD secured a place in both the WHO and AARP Networks of Age-Friendly Communities. We are actively at work with a Steering Committee comprised of Community Leaders to develop an Action Plan of strategies to increase livability of our community (see current list at end). We have committed to supporting Age-Friendly Champaign-Urbana for the long-term.

In addition, we keep in touch with our stakeholders through our listserv, delivery of bimonthly newsletter, a monthly seminar during the academic year, and our website ([chad.illinois.edu](http://chad.illinois.edu)).

### **JUSTIFICATION:**

#### **Rationale**

The Center on Health, Aging, and Disability within AHS is the only campus entity dedicated to scholarship related to the challenges of aging and disability. We are largely dedicated to serving faculty within AHS. However, as most of our faculty are involved in

interdisciplinary work on campus, we provide indirect resources to others in that context. While individual faculty have established laboratories focused on aging or disability, no central unit dedicates research-related resources/supports to these topics. The Division of Disability Resources and Educational Services (DRES), also within AHS, is mainly a service-oriented center to assist with accommodations for students with visible and non-visible disabilities and doesn't provide support for research. The Illinois Health Sciences Institute (IHSI) has a role in supporting all (not just aging and disability) campus health-related research and CHAD staff work closely with IHSI to support its mission and benefit from its assistance. At Beckman, there is a research group called Cognition, Lifespan Engagement, Aging, and Resilience (CLEAR) that promotes scientific research on the nature of aging and successful cognitive development during adulthood, with a focal interest in how engagement contributes to cognitive health and well-being with aging. While CHAD collaborates with CLEAR, the cognitive focus of this group is much narrower than the broader focus of aging promoted by CHAD. We also help promote research goals surrounding veterans' health.

### **Impact for AHS and Campus**

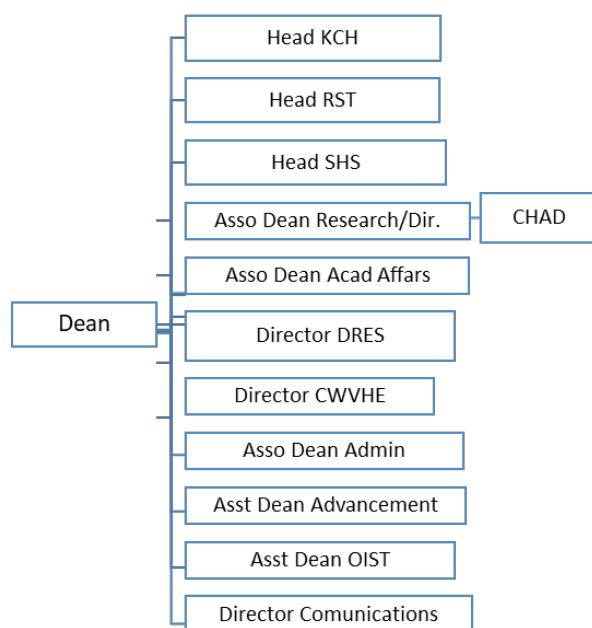
CHAD is a center within the College of AHS and serves faculty in that unit, but enriches all campus units by assisting AHS faculty and non-AHS Affiliate Members in forming interdisciplinary campus research teams and by liaising with research sponsors, industry, local and state government, non-governmental organizations. For example, CHAD has collaborated with the Health Care Engineering Systems Center to obtain a cluster hire focused on health technology and aging and to bringing together health scientists and engineers to compete for center grants from National Institutes of Health (NIH), National Institute on Disability, Independent Living, and Rehabilitation (NIDILRR), and the National Science Foundation (NSF). In addition, as part of our Age-Friendly Champaign-Urbana effort, we have engaged external stakeholders to improve livability in our local community. We have also partnered with other entities, including the Champaign and Urbana City Governments and Park Districts, Clark Lindsey Village, Carle Foundation Hospital, CU Mass Transit District, Community Foundation of East Central Illinois, CRIS Healthy Aging, AARP, Health Alliance, Housing Authority of Champaign County, Osher Lifelong Learning Institute, Senior Resource Center – Family Service, United Way of Champaign County, Village of Savoy, Champaign Regional County Planning Commission, and Champaign-Urbana Public Health District, on a number of projects. These relationships are beginning to establish unique research interactions with AHS and campus faculty. For example, CHAD leases an apartment in Clark Lindsey Village as part of its CHART research theme to engage with older adults on health technology research in their living community. By initiating and standing up specific research themes related to health, aging, and disability CHAD helps position faculty within the College of AHS to form innovative, interdisciplinary research teams that will successfully compete for external funding. CHAD also helps promote research to translation by introducing faculty and their projects to external stakeholders. Likewise, stakeholders' challenges inform research, resulting in work that has mutual benefit.

## PROPOSED STRUCTURE:

### Reporting Lines

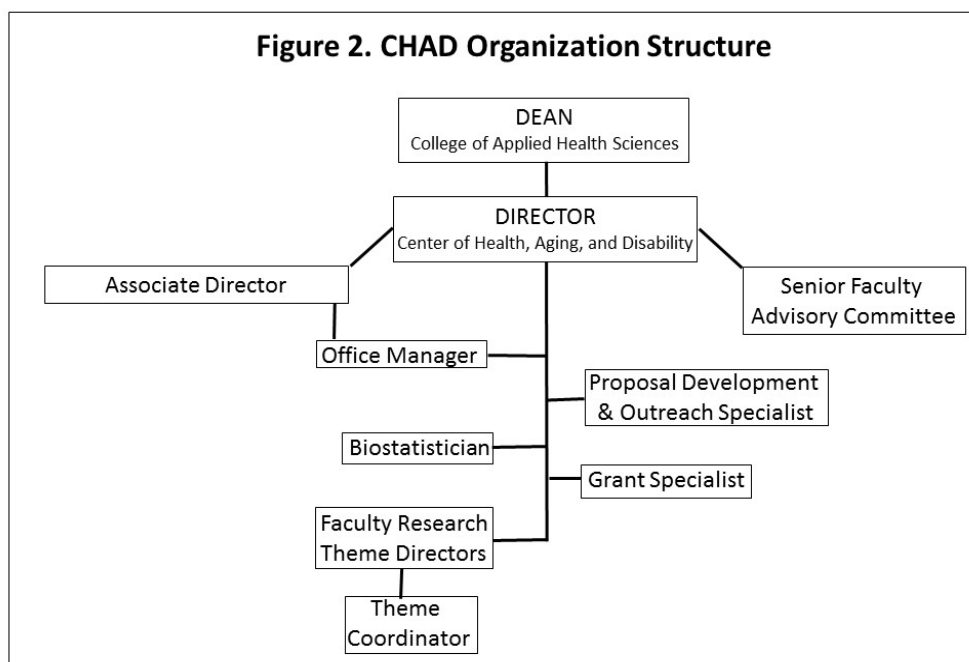
The Center on Health, Aging and Disability (CHAD) is a unit within the Office of the Dean of the College of Applied Health Sciences (**see Figure 1 below**). The Director of the Center on Health, Aging, and Disability reports directly to the Dean of the College of Applied Health Sciences. The College of AHS supports the Center financially as well as by providing assistance with information technology, communications, and human resources.

**Figure 1. College of AHS Organizational Structure**



**Figure 2** depicts CHAD's organizational structure. This figure includes internal reporting lines. The Center Director reports to the Dean of the College of Applied Health Sciences. The Senior Faculty Advisory Committee provides advice and guidance to the Center Director. This committee is composed of the senior faculty/staff from all units within the College. The Director also consults with the academic unit department heads on items of importance to the college and center. The Director and Associate Director are supported by a part-time administrative aide. The Associate Director reports to the Director and currently holds a portfolio containing corporate relations, intellectual property and technology management, Veterans health, and movement disorder research. The Proposal Development and Outreach Specialist has the dual role of facilitating community outreach (including major support of Age-Friendly Champaign-Urbana) and assisting with faculty proposal development. The Grants Specialist is the major contact for proposal development including acting as a liaison between faculty PI's and the Office of Sponsored Programs (SPA). The CHAD Biostatistician provides statistical support to faculty and graduate students and is involved in many grant projects. CHAD hosts Faculty Research Theme Directors to promote innovative, interdisciplinary research themes by providing partial

support for a Theme Coordinator who reports to the Theme Director. All of these positions report to the CHAD Director.



CHAD provides faculty and graduate students with a variety of services, educational and outreach opportunities, and activity space. **Table 1** (following page) depicts most of the services, activities, and space provided by CHAD. As examples, CHAD supports a Pilot Grant Program that provides funding for junior faculty to generate important preliminary research data for external grant submission. CHAD hosts or participates in several research and career development activities designed to improve faculty productivity in the best interests of our campus. CHAD stands up new research themes designed to bring together campus strengths to compete for external funding. Lastly, CHAD maintains meeting and research space for its missions.

### **Staffing Needs**

Support for CHAD staff comes from revenue generated by college-specific activities (e.g., Undergraduate and graduate student tuition, donor funds, ICR), while CHAD's programmatic activities are supported by gift funds and a portion of the college-generated ICR. As a part of the original application for temporary status, one of the goals was to establish a permanent director. Dr. Kenneth Watkin became the permanent Center Director in 2011. With Dr. Watkin's retirement, Dr. Jeff Woods became Director in 2014. Dr. Woods is a Professor in Kinesiology and Community Health and the Associate Dean for Research of the College of AHS with appointments in the Division of Nutritional Sciences

<b>Table 1. CHAD Service, Activities, and Space</b>		
<b>Service/Activity/Space</b>	<b>Description</b>	<b>Rationale/Benefit</b>
<b>Pilot Grant Program</b>	Annual \$30,000 awards (2-6) to generate preliminary data for external grant submissions (mainly for junior faculty)	Junior faculty need support to generate pilot data to be competitive in external grant submissions, this supplements the campus Research Board and other mechanisms. Since 2009; this program has awarded \$590,000 in grants which have attracted a little over \$6 million in external funding (~10 fold return on investment)
<b>Travel Award Program</b>	Award program to assist with travel costs associated with research presentations at scientific conferences	Helps faculty become visible and increase the impact of their work, including in front of potential P&T reviewers
<b>Proposal Development</b>	CHAD staff assist PI's with proposal development from inception to submission	Staff support to conserve our most valuable resource, faculty time. Assistance removes barriers to proposal submission resulting in more proposals and more competitive proposals
<b>Proposal Review Program</b>	CHAD provides internal proposal review and provides incentives for disciplinary external proposal review	Proposal pre-review before submission to sponsor improves competitiveness and likelihood for funding
<b>Compass Program</b>	First semester orientation program for new faculty regarding career development and UIUC policies	Acquaints new faculty members to UIUC campus culture and procedures, provides best practices for research and career development
<b>CHAD Seminar Series</b>	A monthly seminar series dedicated to research and career development for faculty and graduate students	Provides faculty and students with information about local and campus research resources, administration, and strategies/best-practices about research development
<b>CHAD Symposia</b>	Annual symposium supported by CHAD on topics relevant to our mission and advertised campus-wide	Provides visibility to the Center and AHS faculty, promotes interdisciplinary research, provides outreach mechanism
<b>Grantsmanship Mentoring</b>	CHAD has partnered with the ACES Research Academy and the Interdisciplinary Health Sciences Institute's NIH Grants Workshop to support AHS faculty participation and grant mentoring	Provides junior faculty with training and knowledge to compete for external funding; AHS senior faculty provide a service to the University
<b>Undergrad internships</b>	CHAD hosts 1-3 undergraduate students/semester to partake in activities related to our community outreach Age-Friendly Champaign-Urbana effort	Provides participating students with an immersive experience in community outreach related to aging
<b>Erickson Family Grants</b>	Provides small pilot grants for research in schizophrenia (open to campus)	Supports data generation for proposal submissions in schizophrenia

<b>CHART Research Theme</b>	Collaborations in Health, Aging, Research, & Technology, or CHART, is an interdisciplinary research program comprised of University of Illinois Urbana-Champaign faculty, community members, and healthcare providers devoted to supporting research efforts that promote aging successfully by using technology.	Provides a campus framework for research in health, technology, and aging. Directed by Dr. Wendy Rogers, this program has already garnered several high profile center grants including TechsAge2 (collaboration with Ga Tech) and CREATE. Supports the lease of the CHART Apartment in Clark-Lindsey Village for research and outreach.
<b>Formation of Interdisciplinary Research Teams</b>	Junior faculty and more established faculty require assistance in finding the right disciplinary and collegial partners to engage in interdisciplinary research	Thoughtful and purposeful formation of research teams leads to more successful external proposals and research outcomes
<b>Poster Print Service</b>	CHAD provides a high resolution poster printing service (on paper or fabric) for AHS faculty and graduate students	High quality posters improve visibility and quality of faculty/student research presentations, while also saving money spent on external vendors
<b>Conference Room and Laboratory Space</b>	CHAD maintains several conference rooms and laboratories for faculty and student use	Provides valuable space for interaction, videoconferencing, and research
<b>LIFE Home Research Laboratory</b>	CHAD/AHS is developing an ~6,000ft <sup>2</sup> smart home research laboratory called Living in Interactive Future Environments (LIFE) Home in the research park	This facility will be a campus-wide research hub for simulated home environment research, classroom and learning event space, industry and community partnerships, and collaborations with health care professionals

and the Carle Illinois College of Medicine. A half-time Office Manager supports the administrative activities of CHAD. In addition, CHAD provides pre-award support for College grants and contract proposals with staff support being provided by 3 full-time positions including a Proposal Development and Outreach Specialist, Grant Specialist, and Biostatistician. Staff salaries and sources of support can be found later in the proposal in the Budget and Funding Strategy section. The College Office of Information, Security, and Technology provides support for CHAD-based laboratories, computers, conference rooms, CHAD servers for the website, conferences and seminars, and other technological needs. The College Communications (Media Support) staff provides print, electronic, and web media services to the Center.

## **ACADEMIC IMPLICATIONS:**

### **Membership (Full or Affiliate)**

All tenure-track and tenured faculty and specialized faculty in AHS are *Full Members* of CHAD. This affiliation is a zero-time appointment but comes with the ability to utilize CHAD and all of its services. Full members agree to support CHAD and its initiatives. Research Theme Directors are supported by a coordinator paid for by CHAD but have no formal effort outside of their research appointment to their home department. Faculty at UIUC

external to AHS can join CHAD as an *Affiliate Member* (also zero-time appointments). Potential *Affiliate Members* need to fill out a brief application that is reviewed by CHAD's Senior Faculty Committee for approval. Affiliate member status is reviewed every 5 years. Affiliate members also agree to support CHAD and its initiatives and are eligible to receive some of the benefits of *Full Members* including

- access to CHAD conference rooms
- poster print service
- biostatistical support
- assistance with grant proposal submissions
- matchmaking with external stakeholders
- receiving our bimonthly newsletter
- CHAD seminars with some restrictions and priority considerations (e.g. AHS Full Members have scheduling priority).

A current list of members and affiliates can be found at the end of this proposal. CHAD currently has 91 Full Members and 65 Affiliate Members. Affiliate members come from many campus units including (but not limited to) Social Work, Psychology, Library and Information Sciences, Engineering, ACES, and Education.

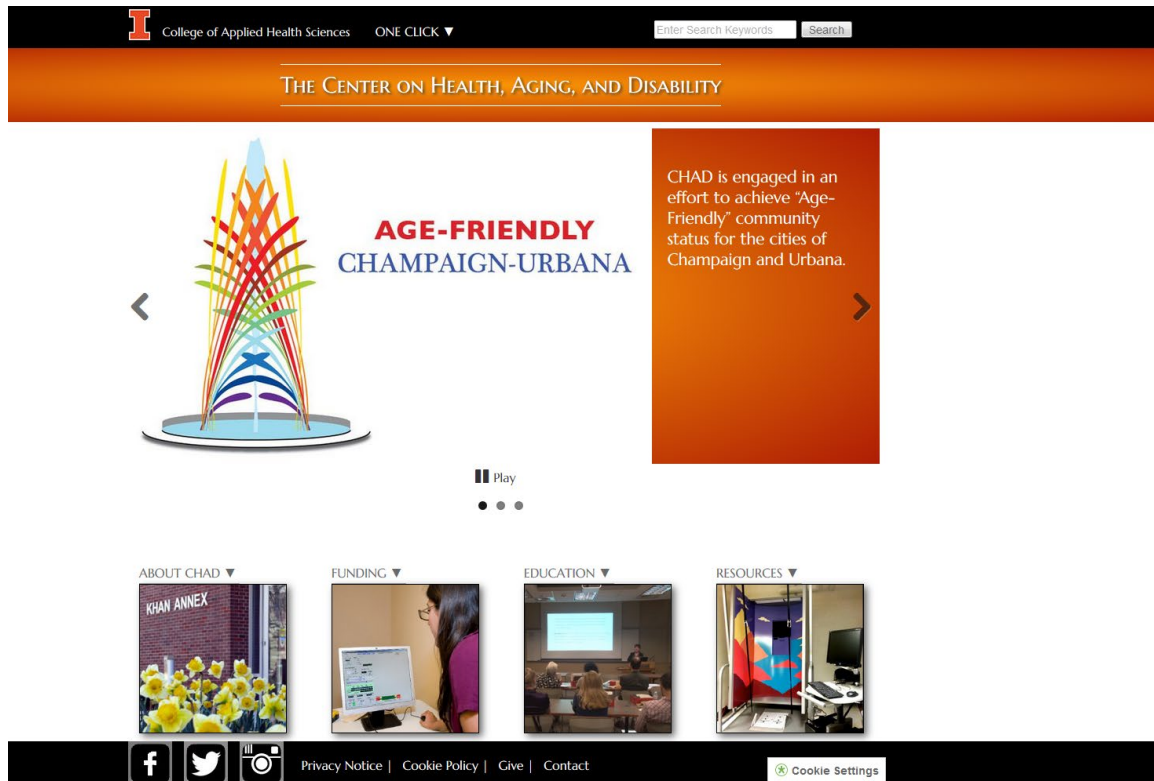
### **Educational Mission**

CHAD does not currently offer any courses for student credit, nor does it have plans to do so. Currently, several CHAD staff guest lecture in AHS academic programs. The Director does offer independent study credit under his KCH rubric for undergraduates to be involved in various activities mainly related to our Age-Friendly Champaign-Urbana outreach effort. For example, students have provided weekly support to Connections Café (an outreach effort with older adults), special events (e.g., Falls Expo, Celebrate Aging Week), and conducted research on other Age-Friendly communities helping us prepare our action plan. Main educational activities revolve around faculty research and career development and grantsmanship activities. The Director also supervises 2 graduate students who focus on digital information accessibility with other campus stakeholders through a two year gift from Microsoft as an example of corporate relations activities CHAD pursues.

### **Impact of CHAD on AHS and Campus Resources**

CHAD does not impact the library beyond normal faculty use. CHAD depends on college service units like the Office of Information, Security, and Technology for its information technology and website needs (**see Figure 3** CHAD homepage below or at <http://chad.illinois.edu/>). It also depends on the college Communications Office and Development Office. Importantly, CHAD depends on the College of AHS, its gifts, and generated ICR for financial support. CHAD acts as a liaison between AHS faculty and campus research-support services. In this way, CHAD helps to maximize the use of campus resources like, for example, IHSI, the Office of Proposal Development, Research Data Services, Office of Technology Management, Office of Corporate Relations, the Independent Research Units (e.g. Beckman, IGB), IPRH, and the Social and Behavioral Sciences initiative.

**Figure 3. CHAD Homepage**



## **Facilities**

The College of Applied Health Sciences provides the space and facilities for the Center. They include access to AHS classrooms and seminar/conference rooms. The Director's Office and a support staff person are on the first floor (NW corner) of the Khan Annex to Huff Hall. The Center on Health, Aging, and Disability is housed in the Khan Annex of Huff Hall. This new, modern facility is the nucleus of studies bringing together leading scholars from throughout the campus, nation, and world. We are currently renovating an additional space in 104 Huff Hall to serve as the CHAD Proposal Service Center where our research development staff will be housed.

Center members have access to state-of-the-art facilities, including conference facilities, seminar rooms, the McKecknie Laboratory, and the Living in Interactive Future Environments (LIFE) Home, a smart home research facility. All of these facilities may be scheduled through the CHAD office. Specifically, the CHAD Main Conference Room is located in the CHAD office - Room 1008a in the Khan Annex of Huff Hall. It seats 14 people and offers audio conferencing and video projection facilities.



The CHAD Videoconference Room is located in 3015 in Khan Annex of Huff Hall. The facility will seat 14 people. This is a complete video teleconferencing facility. Research laboratory space is located in 3019 Khan Annex of Huff Hall and the James K. and Karen S. McKechnie Laboratory is also located in the Khan Annex and currently houses the Illini Fall Clinic. In addition, there a number of classrooms and seminar rooms available to CHAD members. These are: 1001 Khan Annex of Huff Hall - 40 people, 1002 Khan Annex of Huff Hall - 50 people, 2001 Khan Annex of Huff Hall - 120 people, 3005 Khan Annex of Huff Hall – 30 people.



The LIFE Home Research Facility will be a new campus hub for activities related to technologies that promote health and independence including: in-home sensors, connected wearables, human-computer interfaces, telemedicine, telerehabilitation, home materials, smart appliances, indoor climate technologies, assistive devices, social and assistive robots, and communication technologies.

Groundbreaking for this ~5,700ft<sup>2</sup> facility will occur in March of 2019 with completion by December 2019. It will be located on Bailey Drive at the southern end of the Research Park behind Ashton Woods Apartment complex off of 1<sup>st</sup> Street. It will support CHART, but also foster new interdisciplinary activities between AHS and the College of Engineering, ACES, Social Work, Architecture, Landscape Architecture, iSchool, and the Carle-Illinois College of Medicine to name a few. It will include a small 2 bedroom home environment surrounded by an observation deck, Transportation Research Laboratory, Health Maker Space, a conference room and gathering space, and 4 offices. Partial revenue support to sustain the facility will come in the form of fee-for-service use on research grants, naming rights, industry leases, and philanthropic support.



## **BUDGET AND FUNDING STRATEGY:**

### **Operating Expenses**

Staff salaries account for a significant (~71%) fraction of CHAD's overall budget. Current salary expenses can be found in **Table 2** below. Staff includes the Director, Associate Director, and other staff. The Director (Woods) also holds the title of Associate Dean for Research for AHS. The Associate Director receives a stipend for his efforts with the Center. A Grants Specialist, Proposal Development and Outreach Specialist, and Biostatistician staff our pre O award/proposal development office. Our Research Coordinator provides support for our Collaborations in Health, Aging, Research, and Technology (CHART) theme.

The remaining ~29% of CHAD's operating expenses are attributable to its programs (**Table 2**). Our gift funds support disability research (Disability Research Fund), CHAD seminars

and outreach activities (Merrick), pilot grants and support services for faculty and senior research staff (Neer Research), disability research or establishment of integrated rehabilitation science center (Koopman), and schizophrenia research (Erickson). The ICR account is flexible. The annual income from these sources is ~\$140,000 annually and we take this into account when planning our annual programmatic activities.

Table 2. CHAD 2019 Budget					
EXPENSES		INCOME			
Salaries (college supported)		College Funding			
Director (50%)	109,825				
Associate Director	7,000				
Biostatistician	108,926				
Proposal Development and Outreach Specialist	60,600				
Grants Specialist	52,000				
Research Coordinator (CHART)	41,000				
<b>Total</b>	<b>379,351</b>	<b>379,351</b>			
		Gift and ICR			
Programmatic Activities (Gift/ICR supported)		ACCOUNTS	Annual Income (~)	Current Balance (as of 1/18/19)	Change since last year
Pilot Grant Program	90,000	ICR	30,000	220,494	23,048
Travel Grant Program	40,000	Neer	57,000	252,737	1,518
Symposia/Seminars	15,000	Disability Research	15,000	150,506	41,502
Research Academy	4,000	Koopman	33,000	221,878	120,844
Poster Printing	2,500	Merrick	4,000	36,238	14,519
Office, Miscellaneous	1,000	Erickson	1,000	3,993	1,164
<b>Total</b>	<b>152,500</b>		<b>140,000</b>	<b>885,846</b>	<b>156,499</b>

## Funding Strategy

The College receives no central campus funding as it relates to the general revenue (state) funds and is not requesting central campus funding to support the Center. The College of AHS currently supports Center staff salaries through revenue generated by college-specific activities (e.g., undergraduate enrollments and IUs, graduate tuition, donor-generated funds). External gift and ICR funds have supported CHAD's programmatic activities. Our gift funds support disability research (Disability Research Fund), CHAD seminars and outreach activities (Merrick), pilot grants and support services for faculty and senior research staff (Neer Research), disability research or establishment of integrated rehabilitation science center (Koopman), and schizophrenia research (Erickson). The ICR account is flexible.

There are no plans to replace College-generated revenue support for CHAD staff salaries as these staff serve important support functions for the college. However, when appropriate, select CHAD staff (i.e. biostatistician) have and will have allotted effort on grant proposals. This support pays a portion of the salary thus reducing reliance on College support. If CHAD is to grow beyond its current size, it must realize increased support from either gifts or ICR generation. CHAD is currently working with college advancement staff to prioritize and highlight activities that would resonate with potential donors. The development of the LIFE Home and CHART are highly attractive activities to potential donors. CHAD indirectly strives to increase AHS and campus external research award success (and ICR generation) by assisting faculty with proposal development.

## **OUTCOMES:**

### **Indicators of Success**

There are a number of indicators of success that CHAD tracks and analyzes to inform effectiveness of our services and programs and align our priorities.

A primary function of CHAD is to provide faculty and student support for research proposals. As such, we track proposal metrics for the college. Research benchmarks include: number of proposals submitted (as PI or co-I), size of proposals (dollars requested, years of project), indirect costs requested and awarded, source of funding, level of faculty involvement (% effort, intellectual contributions), success rates, and grant expenditures. We use these metrics to track how our research support services affect faculty research productivity as it relates to grant submissions and awards. In addition to the quantitative metrics, we also administer occasional surveys to our users (faculty and students) to gauge use of our services and their usefulness. We also track faculty productivity metrics like honors and awards, publications and impact, intellectual property disclosures, patents, licenses, and mentions in the press.

As an example, we provide data for our CHAD Pilot Grant Program since its inception in 2010. CHAD has awarded \$590,000 across 29 grant proposals. As a direct result of this seed funding, the College of AHS has been awarded \$6,018,063 in external research support; a ten-fold return on investment. Of note are grants from NIH (Boppart R21 and R01, Mullen R01), the Department of Defense (Husain), the National Multiple Sclerosis Society (several from Sosnoff), and the Renal Research Institute (Wilund). In addition, CHAD's CHART research theme Directed by Professor Wendy Rogers has generated early successes including a 5-year \$4.6 million grant from NIDILRR for a Rehabilitation Engineering Research Center on Technologies to Support Aging-in-Place for People with Long-Term Disabilities in collaboration with Georgia Tech University.

We also perform outreach functions and track those interactions and activities that develop from them. Public engagement benchmarks include: number of interactions with external stakeholders, research projects (and associated metrics) with external partners, the number of attendees at workshops, symposia, and seminars, interactions with for profit companies and resulting research, entrepreneurial, or educational opportunities.

Lastly, we are engaged in some educational activities and measure their effectiveness. Educational benchmarks include financial support for student research, attendance and feedback from workshops on faculty research and career development, the number of undergraduate interns and their feedback about their experiences.

### **Evaluation of the Unit**

The Dean of the College of AHS evaluates the unit annually. The Dean request an annual report from the Director. This report outlines the overall state of the unit, progress relative to its mission and to past goals, opportunities and threats, strategic priorities and goals, actionable steps, and financial information. The Dean and Director meet after the report is

submitted to discuss it and for the Director to receive feedback. This report also informs the college annual plan. Within the unit, the Director meets annually with CHAD staff in preparing an annual evaluation report. The Director then meets again to discuss the report with each staff member.

#### **CLEARANCES:**

A letter of support from the unit to which the proposed unit will directly report must be included.

(Clearances should include signatures and dates of approval. **These signatures must appear on a separate sheet.** If multiple departments or colleges are sponsoring the proposal, please add the appropriate signature lines below.)



\_\_\_\_\_  
Proposal Clearances:

2/19/19  
\_\_\_\_\_  
Date:

Dean, College of Applied Health Sciences



\_\_\_\_\_  
Proposal Clearances:

2/19/19  
\_\_\_\_\_  
Date:

Director, Center on Health, Aging, and Disability

## **AHS Members of CHAD**

Bartlo	Wendy	Proposal Development and Outreach Specialist	CHAD
Shen	Sa	Research Biostatistician	CHAD
Hunnicutt	Jeni	Visiting Research Specialist	CWVHE
Lange	Dustin	Associate Director Academic & Career Services	CWVHE
Wheeler	Ingrid	Assistant Director, Behavior Health Programs	CWVHE
Collins	Kimberly	Clinical Psychologist, DRES Associate Director	DRES
Malik	Patricia	Director	DRES
Adamson	Brynn	Teaching Assistant Professor	KCH
Aguinaga	Susan	Assistant Professor	KCH
Alston	Reginald	Associate Dean for Academic Affairs / Professor	KCH
An	Ruopeng	Assistant Professor	KCH
Andrade	Flavia	Associate Professor	KCH
Bobitt	Julie	Director of I-Health, Assistant Teaching Professor	KCH
Boppart	Marni	Associate Professor	KCH
Burd	Nicholas	Assistant Professor	KCH
Chiu	Chung-Yi	Assistant Professor	KCH
DiFilippo	Kristen	Assistant Teaching Professor	KCH
Gobin	Robyn	Assistant Professor	KCH
Gothe	Neha	Assistant Professor	KCH
Graber	Kim	Professor	KCH
Grigsby-Toussaint	Diana	Associate Professor	KCH
Hernandez	Manuel	Assistant Professor	KCH
		Asst. Director of Technology, Health & Independence Program	
Holtzclaw-Stone	Nicole	Program	KCH
Jan	Yih-Kuen	Associate Professor	KCH
Kaplan	Justine	Lecturer/Interim Director of MPH Program	KCH
Khan	Naiman	Assistant Professor	KCH
Klonoff-Cohen	Hillary	Professor	KCH
Konopka	Adam	Assistant Professor	KCH
Koon	Lyndsie	Post Doc Research Associate	KCH
Krahling	Heidi	Visiting Research Specialist	KCH
Lara-Cinisomo	Sandraluz	Assistant Professor	KCH
Littlefield	Melissa	Professor	KCH
Lopez-Ortiz	Citlali	Assistant Professor	KCH
McAuley	Edward	Emeritus	KCH
Mejia	Shannon	Assistant Professor	KCH
Mullen	Sean	Assistant Professor	KCH
Notaro	Stephen	Teaching Associate Professor	KCH
Pastor	Brian	Research Coordinator	KCH
Petruzzello	Steven	Professor / Associate Head for Graduate Affairs	KCH
Pindus	Dominika	Assistant Professor	KCH

Rice	Ian	Assistant Professor	KCH
Rice	Laura	Assistant Professor	KCH
Richards	Kevin	Assistant Professor	KCH
Rogers	Wendy	Professor	KCH
Rosenblatt	Karin	Associate Professor	KCH
Schwingel	Andiara	Associate Professor	KCH
Singleton	Chelsea	Assistant Professor	KCH
Sosnoff	Jacob	Professor / Associate Director CHAD	KCH
Strauser	David	Professor	KCH
Sydnor	Synthia	Associate Professor	KCH
Trinh	Linda	Assistant Professor	KCH
Wilund	Ken	Professor	KCH
Woods	Amy	Dept. Head / Professor	KCH
Woods	Jeffrey	Associate Dean for Research, Director CHAD, Professor	KCH
Zhu	Weimo	Professor	KCH
Barnett-Morris	Lynn	Associate Professor	RST
Berdychovsky	Liza	Assistant Professor	RST
Browning	Lara	Lecturer	RST
Browning	Matthew	Assistant Professor	RST
Huang	Joy	Assistant Professor	RST
Liechty	Toni	Associate Professor	RST
Lizzo	Bin	Lecturer	RST
McCann	Kenneth	Director, Office of Recreation and Park Resources	RST
Payne	Laura	Professor/Dir-Graduate Studies	RST
Raycraft	Michael	Lecturer	RST
Rigolon	Alessandro	Assistant Professor	RST
Santos	Carla	Professor/Interim Department Head	RST
Shinew	Kimberly	Professor/Director -Undergraduate Studies	RST
Stewart	Bill	Professor	RST
Stodolska	Monika	Professor	RST
Welty Peachey	Jon	Associate Professor	RST
Woolf	Julian	Assistant Professor	RST
Aronoff	Justin	Assistant Professor	SHS
Bottalico	Pasquale	Assistant Professor	SHS
Chambers	Ron	Associate Professor	SHS
Channell	Marie	Assistant Professor	SHS
Flaherty	Mary	Assistant Professor	SHS
Hadley	Pam	Associate Professor	SHS
Hahn	Laura	Assistant Professor	SHS
Hengst	Julie	Associate Professor	SHS
Husain	Fatima	Associate Professor	SHS
Ishikawa	Keiko	Assistant Professor	SHS
Johnson	Cynthia	Associate Professor	SHS

Kirk	Karen	Department Head	SHS
Lawrence	Amanda	Clinical Assistant Professor	SHS
Mendes	Clarion	Clinical Assistant Professor/Director of Clinical Ed	SHS
Mertes	Ian	Assistant Professor	SHS
Monson	Brian	Assistant Professor	SHS
Mudar	Raksha	Associate Professor	SHS
Reidy	Brittney	Clinical Assistant Professor	SHS
Rispoli	Matt	Associate Professor	SHS

### **Non-AHS Affiliates of CHAD**

Rachel Michelle Magee	Assistant Professor, Library and Information Science
Amanda M Ciafone	Assistant Professor, Media and Cinema Studies
Masooda N Bashir	Assistant Professor, School of Information
Dr. Karen Tabb Dina	Assistant Professor, School of Social Work
JJ Pionke	Assistant Professor, University Library
Patty Jones	ASSOC DIR FOR RESEARCH, Beckman
Antonios Michalos	ASSOC DIR, HCESC
William G Goodman	Associate Dean Admin, AHS
Barry James Ackerson	Associate Dean for Academic Affairs, School of Social Work
Margaret Browne Hunt	Associate Director - Cancer Center at Illinois
Katheryne Rehberg	Associate Director of Corporate Relations
Ruby Mendenhall	Associate Professor of African American Studies
Carla Desi-Ann Hunter	Associate Professor of Psychology
Miles James Efron	Associate Professor School of Information
Kevin J Hinders	Associate Professor, Architecture
Liang Y Liu	Associate Professor, Civil Engineering
Brian Gabriel Ogolsky	Associate Professor, Human Development and Family Studies
Paul E McNamara	Associate Professor, Nutritional Sciences
Christopher R Larrison	Associate Professor, School of Social Work
Janet Liechty	Associate Professor, School of Social Work
Hong Li	Associate Professor, School of Social Work
Lynne Marie Dearborn	Associate Professor, Urban Planning
Tor Jensen	BIOMDCL RSCH LAB DIR, IHSI
Wynne Sandra Korr	Dean and Professor of Gender and Women's Studies
Bridget A Melton	Director of Communications, IHSI
Leanne Knobloch PhD	Director of Graduate Studies, Professor of Communication
Melissa Edwards	Director of Research Communications, OVCR
Brent A McBride	Director, Child Development Lab & Professor, Human Development
Rodney W Johnson	Director, Nutritional Services
Rashid Bashir	Dean, College of Engineering
Carolyn L Beck	Industrial & Enterprise Sys Eng
Michelle L Osborne	Office Manager, Coordinated Science Lab

Margaret S Kelley	Professor
William C Sullivan	Professor and Head, Landscape Architecture
Jennifer Kirkpatrick Robbennolt	Professor College of Law
Kevin Chen-Chuan Chang	Professor Computer Science
Ezekiel Kalipeni	Professor Geography
Helen A Neville	Professor of African American Studies Educational Psychology
Robert Hughes Jr	Professor of Child Development
Elvira de Mejia	Professor of Food Science
Deana C McDonagh	Professor of Industrial Design
Mohamed Boubekri	Professor, Architecture
Richard L Kaplan	Professor, College of Law
Alex Kirlik	Professor, Computer Science
Klara Nahrstedt	Professor, Computer Science
Tao Xie	Professor, Computer Science
Mary Kalantzis	Professor, Education Policy, Organization and Leadership
Daniel G Morrow	Professor, Educational Psychology
Dorothy Espelage	Professor, Educational Psychology
Elizabeth A L Stine-Morrow	Professor, Educational Psychology
Ravishankar K Iyer	Professor, Electrical & Computer Eng
Mark Hasegawa- Johns	Professor, Electrical and Computer Engineering
Sara McLafferty	Professor, Geography and Geographic Information Science
Barbara Fiese	Professor, Human Development and Family Studies
T. Kesavadas	Professor, Industrial and Enterprise Systems Engineering
Rakesh Nagi	Professor, Industrial and Enterprise Systems Engineering
Naira Hovakimyan	Professor, Mechanical Science and Engineering
Andrew G. Alleyne	Professor, Mechanical Science and Engineering
Elizabeth T Hsiao-Wecksler	Professor, Mechanical Science and Engineering
Dolores Albarracin	Professor, Psychology
Sandra Kopels	Professor, School of Social Work
Cynthia Buckley	Professor, Sociology
Gillian Snyder	Research Development Manager, IHSI
Rama Ratnam	Senior Research Scientist

<b>Age-Friendly Champaign-Urbana Steering Committee (December 2018)</b>			
<b>First Name</b>	<b>Last Name</b>	<b>Title</b>	<b>Organization</b>
Drew	Bargmann	Special Services Manager	Champaign-Urbana Mass Transit District
Tim	Bartlett	Executive Director	Urbana Park District
Wendy	Bartlo	Proposal Development and Community Outreach Specialist	Center on Health, Aging, and Disability
Amy	Brown	CEO	CRIS Healthy Aging
Linda	Coleman	Chair, Board of Directors	Osher Lifelong Learning Institute
Joe	DeLuce	Executive Director	Champaign Park District
Joan	Dixon	CEO & President	Community Foundation of East Central Illinois
Dennis	Donaldson	Treasurer	Village of Savoy
Kristen	Gisondi	Human Services Transportation Coordinator	Champaign County Regional Planning Commission
Sue	Grey	President and CEO	United Way of Champaign County
Patrick	Harness	Community Activist	Retired
Dawn	Henry	Director of Rehabilitation	Carle Foundation Hospital
Kathleen	Holden	Retired Administrator	University of Illinois at Urbana-Champaign
Anna	Lane	MTW Coordinator	Housing Authority of Champaign County

Ben	LeRoy	Associate Planner	City of Champaign
Rosanna	McLain	Director	Senior Resource Center, Family Service
Julie	Pryde	Public Health Administrator	Champaign-Urbana Public Health District
Debra	Reardanz	President and CEO	Clark-Lindsey Village
Linda	Tauber-Olson	Regional Director Volunteers & Faith in Action	OSF HealthCare Heart of Mary Medical Center
Jeff	Woods	Associate Dean for Research and Director	Center on Health, Aging, and Disability
		TBD	City of Urbana