
**Proposal to the Senate Educational Policy Committee
for the Formation of New Units
(including Permanent Centers and Institutes)**

1. SPONSOR NAME AND EMAIL:

Dr. Eva Pomerantz
Professor and Director, Social & Behavioral Science Institute
217.244.2538
pomerantz@illinois.edu

2. COLLEGE CONTACT NAME AND EMAIL (for units housed within a College):

Dr. Susan Martinis
Vice Chancellor for Research and Innovation
217.244.2405
martinis@illinois.edu

3. TITLE OF PROPOSAL (e.g., Establish the Center for Culturally Responsive Evaluation and Assessment as a Permanent Center in the College of Education; Establish the Department of Comparative and World Literature in the College of Liberal Arts and Sciences):

Establish the Social & Behavioral Science Institute (SBSI) as a Permanent Institute in the Office of the Vice Chancellor for Research and Innovation (OVCRI)

4. DESIRED EFFECTIVE DATE:

May 1, 2026

5. BRIEF DESCRIPTION AND JUSTIFICATION (If this is a for a change in status from Temporary to Permanent, include an explanation as to why the funding, staffing, mission, etc. are stabilized such that the move to permanent make sense at this time):

This proposal is to establish the Social & Behavioral Science Institute (SBSI) as a permanent institute within the Office of the Vice Chancellor for Research and Innovation (OVCRI). This action makes sense at this time for several reasons. The mission of SBSI is to drive transformative social and behavioral science at the University of Illinois Urbana-Champaign (UIUC) that transcends disciplinary boundaries to improve the lives of citizens in Illinois, across the nation, and around the world. SBSI is unique among the interdisciplinary UIUC research units (IRUs) in its capacity to develop connections not only within SBS but with other sciences and the public.

SBSI has continued to grow in impact and scale since its inception as an initiative in 2019 that came out of a recommendation from a task force charged by the Chancellor and Provost. The initiative was then recommended to formally continue after a campus review. Recently SBSI underwent an inaugural review as charged by the OVCRI and was recommended to go to permanent institute status by the VCRI and Provost. SBSI has well established programming and services (e.g., a small grant program, research development services, advanced methodological methods workshops) which are recognized and valued across campus. SBSI has over 200 faculty affiliates who are from all 14 colleges or schools across campus.

Becoming a permanent institute will allow SBSI to work more closely and efficiently with Advancement to pursue additional donor funding (e.g., Advancement has indicated permanent status is significantly more attractive to prospective donors, because of additional classification reasons in the Advancement database) and the sooner we are able to undertake these efforts the better. Additionally, the name follows [Provost guidance](#) for naming convention considerations for the formation of a new unit of research as we are situated at the campus level and span across colleges and schools.

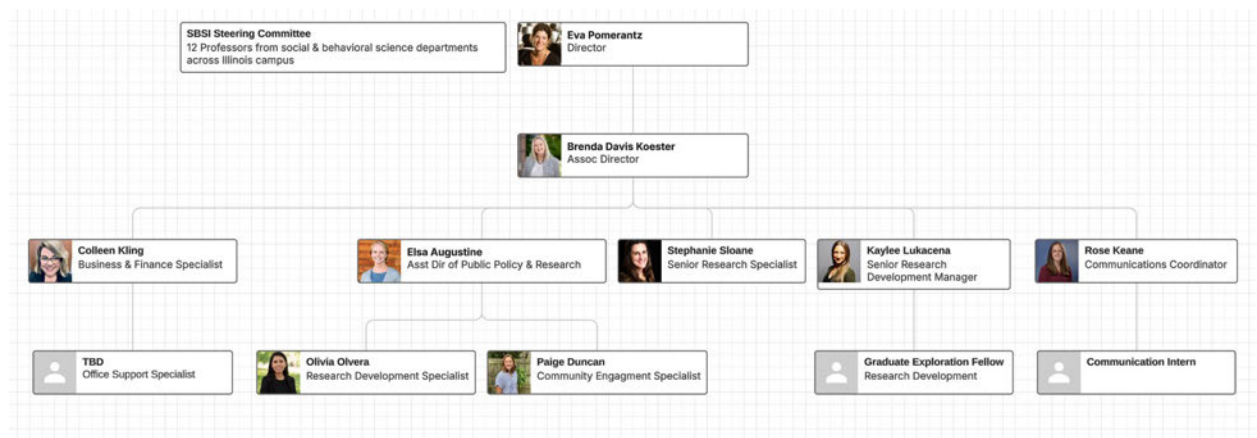
6. GOVERNANCE PROCESS:

- a. Describe the internal (unit/school/college/etc.) governance process applied to this proposal.
- b. Describe any consultation with stakeholders (e.g., other units, units with similar or related programs, students, etc.). As part of this, reach out to the librarian specialist for the unit as early as possible and attach a University Library Impact letter in the addendum.
- c. The university statutes require secret-ballot votes of the faculty to be taken at the level of the unit being formed and all higher

Administrative, Research or Public Service Unit Application units (e.g., school and college), in accordance with the bylaws of each unit. Describe any such votes (e.g., question posed, electorate, timing) and the results. See [Statutes, Article VIII, Section III](#) and [Senate Bylaws, Part D., Section 8. C.](#)

- d. Arrangements for a public hearing on a new unit should be made in consultation with the EPC chair and a description of and minutes from the hearing should be attached as an addendum to the proposal.
- a) The internal governance process that applies to this proposal is the process established for campus-wide institutes which operate within the Office of the Vice-Chancellor for Research and Innovation (OVCRI).

The current organizational chart for the SBSI:



- b) In regard to the process of becoming a permanent institute, there have been significant opportunities to provide input:

- Inaugural 5-year review overseen by a review committee comprised of internal and external stakeholders was appointed and charged by the VCRI and Provost with assessing the long-term viability of the proposed SBSI. The review included an extensive self-review report and presentation, a campus-wide stakeholder survey, and a two-day site visit with meetings with diverse groups of stakeholders. The review committee strongly recommended that SBSI be established as a permanent institute.
- Strategic planning process guided by the SBSI Advisory Committee which included an extensive landscape analysis, survey of current affiliates, three discussion forums

Administrative, Research or Public Service Unit Application
(open to anyone on campus), and an anonymous online survey (open to anyone on campus).

- SBSI Director met with the OVCRI campus-level institute directors and deans of campus colleges and schools to present the strategic plan, discuss plans for going to permanent institute status, and solicit any concerns and ideas for future collaboration (see Addendum Letters of Support from Deans and from Institute/Center Directors). The University Library was also consulted about this proposal (see Addendum University Library Impact Letter).

c). Upon advisement from Nolan Miller, Chair, Senate Committee on Educational Policy, two groups were provided with a secret ballot: Affiliates and Steering Committee members. These groups were sent an email with a link to a confidential and anonymous survey on Webtools where they could reply to the question “You are being asked to vote on if you recommend that CSBS become a permanent institute which will be called the **Social & Behavioral Science Institute** (SBSI) and which will be housed in the Office of the Vice Chancellor for Research and Innovation (OVCRI)” (see Addendum: Affiliate email notification about secret ballot; Steering Committee email notification about secret ballot). Both groups were given two weeks to register their vote (August 20, 2025 – September 3, 2025). The secret ballot results can be found in the Addendum: Affiliate secret ballot results; Steering Committee secret ballot results. Both votes indicated unanimous support for the proposal.

d). In consultation with Nolan Miller, Chair, Senate Committee on Educational Policy, a Public Hearing was scheduled on Zoom for September 3, 2025, at 12:30 p.m. The forum was publicized through the SBSI newsletter that is sent to over 1,400 individuals and was placed in E-week twice, August 24 & 31, 2025. A registration form with an opportunity to provide comments was included in all announcements (see Addendum: Newsletter announcement, E-week announcements, Registration and comments). The forum was attended by 11 individuals (see Addendum: Hearing attendance list and notes; Public Forum transcript).

7. **BYLAWS** (attach the proposed bylaws for the unit)

Leadership

The SBSI Director meets monthly with the VCRI to align the unit's efforts with campus goals, share information about administrative concerns and trends in social and behavioral science, and connect SBSI work with other IRUs in the OVCRI portfolio. While SBSI has over 200 0% faculty affiliates who come from over 37 campus units and all 14 colleges and schools at UIUC, it serves all social and behavioral science faculty across the UIUC campus. SBSI does not serve as the home for tenure-line faculty nor is it a degree-granting unit.

Advisory Board

SBSI's Advisory Board's role is both advisory and consultative. The board is appointed by the SBSI director for staggered three-year terms and are chosen from a range of departments and colleges and schools to reflect the breadth of social and behavioral science across the UIUC campus. The Advisory Board serves as a sounding board for SBSI leadership and provides input on SBSI thematic focus, strategic framework and implementation efforts. The board also evaluates and selects the Social and Behavioral Science Impact award recipients.

Affiliate Program

The SBSI Affiliate Program is open to all tenure-track and non-tenure-track faculty and research staff on the UIUC campus who are actively engaged in social and behavioral science research and who have had some type of involvement with SBSI. They are expected to be active participants in the social and behavioral science community across campus and to complete a brief annual survey to provide input into SBSI's future directions. Affiliates are provided with a 0% appointment which is renewable every five years. Applications are accepted on a rolling basis and approved by the Director. Applicants are accepted who have demonstrated they have met the requirements to be an affiliate (they are a tenure-track, non-tenure track, or research staff on the UIUC campus; have been actively engaged in social and behavioral science research; and who have had some type of involvement with SBSI (e.g, attended an SBSI event)).

Stakeholder Input

SBSI is organized to serve and be responsive to stakeholder and university social and behavioral science needs and concerns. This is achieved through a range of activities that engage the social and behavioral research community (e.g. open houses, topical gatherings such as the Future of Work, advanced methodological trainings). SBSI affiliates are also surveyed annually to collect input on programming and resources offered by SBSI.

The SBSI Director is an active participant in the monthly meetings of campus-wide institute and center directors and has frequent one-on-one meetings with key stakeholders (e.g.,

Administrative, Research or Public Service Unit Application
deans, department heads or chairs, and faculty). These meetings provide opportunities for bi-directional conversations on opportunities for synergy and collaboration.

8. **ADDENDUM** (List all addenda for this proposal that will be attached to this proposal, e.g. public hearing announcements and meeting minutes, FAQ public document, letters of support from campus affiliates and those that might be impacted, including the University Library. Any unit engaged in teaching or research **must** document consultation with the University Library):

- University Library Impact Letter, Claire Stewart
- Letters of Support
 - Provost, John Coleman – *in progress, expected by COB today*
 - Vice Chancellor for Research & Innovation, Susan A. Martinis
 - College/School Deans
 - Dean Rashid Bashir, Grainger College of Engineering
 - Dean German Bollero, College of Agriculture, Consumer & Environmental Sciences
 - Dean Brooke Elliott, Gies College of Business
 - Dean Emily Knox, School of Information Sciences
 - Dean Benjamin Lough, School of Social Work
 - Dean Cheryl Hanley-Maxwell, College of Applied Health Sciences
 - Dean Chrystalla Mouza, College of Education
 - Dean Venetria K. Patton, College of Liberal Arts & Sciences
 - Dean Jake Pinholster, College of Fine and Applied Arts
 - Dean Simon Restubog, School of Labor and Employment Relations
 - Dean Tracy Sulkin, College of Media
 - OVCRI Institute/Center Directors
 - Director Rohit Bhargava, Cancer Center at Illinois
 - Director Stephen Boppart, Interdisciplinary Health Sciences Institute
 - Director Antoinette Burton, Humanities Research Institute
 - Director William Gropp, National Center for Supercomputing Applications

Administrative, Research or Public Service Unit Application

- Director Madhu Khanna, Institute for Sustainability, Energy, and Environment
- Director Praveen Kumar, Prairie Research Institute
- Director Steve Maren, Beckman Institute
- Director Gene Robinson, Institute for Genomic Biology
- Public Forum
 - Newsletter announcement
 - E-week announcements
 - Registration and comments
 - Hearing attendance list and notes
 - Public Forum transcript
- Affiliates
 - Affiliate membership listing
 - Affiliate email notification about secret ballot
 - Affiliate secret ballot results
 - Affiliate feedback, annual survey
- Steering Committee
 - Membership listing
 - Steering committee email notification about secret ballot
 - Steering committee secret ballot results

9. **STATEMENT FOR THE ACADEMIC CATALOG** (if there is text in the [Academic Catalog](#) that will need to be added or updated as a result of this request, please list the URL(s) of the page(s) and the text to update):

N/A

CAMPUS WORKFLOW NOTIFICATION

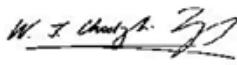

Eva Pomerantz.



09.03.2025

Sponsor Name and Signature

Date

College Contact Name and Signature (if applicable)	Date
Wojtek Chodzko-Zajko 	9/10/2025
Graduate College Contact Name and Signature (if applicable)	Date
Kathryn Martensen 	9/4/2025
Provost Office Contact Name and Signature	Date

1. Unit Objectives and Contributions

Describe specific objectives and measurable contributions the unit will make to the university's mission, paying particular attention to the unit's consistency with the university's focus statement and priorities. Is the unit to be involved in instruction and, if so, to what extent?

The mission of the Social & Behavioral Science Institute (SBSI) is to drive transformative social and behavioral science at the University of Illinois Urbana-Champaign (UIUC) that transcends disciplinary boundaries to improve the lives of citizens in Illinois, across the nation, and around the world. SBSI aspires to make UIUC a national leader through excellence in social and behavioral science across disciplines by leveraging the unique strengths of the Urbana-Champaign campus to foster groundbreaking advances. SBSI maximizes research impact through evidence-based public engagement and research-practice partnerships that bridge science and society, supporting the UIUC land-grant mission. To realize these key strategic directions, SBSI accomplishes this by fostering a dynamic and inclusive social and behavioral science ecosystem across campus and through professional development and training opportunities for faculty. SBSI serves over 1,000 social and behavioral science faculty and staff across more than 30 units located in every college and school across campus.

To achieve maximal impact, SBSI's work revolves around solving grand societal challenges. In the next five years, that work will be concentrated in five interrelated areas in which social and behavioral science is fundamental to addressing both entrenched and emerging problems facing society: (1) technology and society, (2) health and well-being, (3) institutions and organizations, (4) belonging and inclusiveness, and (5) environment and society. SBSI's programming reflects our strategic directions of facilitating and supporting research excellence

Administrative, Research or Public Service Unit Application

and maximizing public impact while prioritizing strengthening the interdisciplinary ecosystem and providing professional development and training on our campus. While SBSI does not directly support instruction, it provides training for faculty and graduate students (e.g., cutting-edge research methodological workshops and interdisciplinary research skills).

2. Need

Explain how the unit will meet regional and state needs and priorities. What is the demand for the unit's services? What clients or population will the unit serve? Identify similar units of administration, research, or public service in the state, at both public and private colleges and universities. Compare the proposed unit with these units and discuss potential impact upon them.

SBSI contributes to all three IBHE Illinois Public Agenda goals of equity, sustainability, and growth. We provide student learning and training opportunities in advanced research methods, policy and public engagement and have several initiatives that directly address issues of equity. These opportunities make students more competitive for future work after leaving UIUC. SBSI contributes to the sustainability of the university and the research enterprise by providing services and leveraging existing resources to support and foster innovative research and public engagement. Our areas of impact (i.e., technology & society, health & well-being, organizations & institutions, belonging & inclusiveness, and environment & society) are all responsive to regional and state needs and priorities. SBSI works collaboratively with other centers and institutes at UIUC to support interdisciplinary research, education, and public engagement.

SBSI is the only unit in the state that is solely focused on serving social and behavioral science research, education, and public engagement efforts on the UIUC campus. There are no other units such as SBSI at public or private research universities in Illinois. At UIUC, there is a research unit based in the College of Liberal Arts & Sciences, the Cline Center, which is focused on computational data and social science. While there are several social &/or behavioral educational programs (University of Illinois -Chicago, Southern Illinois University, University of Chicago), dedicated social &/or behavioral science departments (Illinois Institute of Technology), or degrees/inquiry/areas (Northern Illinois University, DePaul, Loyola, Northwestern), there are only two other social and/or behavioral centers focusing on research. One (Office of Social Science Research, University of Illinois Chicago) serves only departments in their College of Liberal Arts

Administrative, Research or Public Service Unit Application
& Sciences while the second (Social Sciences Research Center) serves only researchers based at the University of Chicago.

3. Organization

Describe the proposed unit's organizational structure. Explain how the unit is organized to meet its stated objectives. Attach the unit's bylaws (or equivalent governing document) and briefly outline the process used to establish them.

The SBSI will be a campus-wide institute which will continue to report to the Vice Chancellor for Research and Innovation (VCRI). The SBSI Director meets monthly with the VCRI to align the unit's efforts with campus goals, share information about administrative concerns and trends in social and behavioral science scholarship, and connect SBSI work with other institutes and centers in the OVCRI portfolio. SBSI has over 200 0% faculty affiliates who come from over 37 campus units and all 14 colleges and schools at UIUC. SBSI, however, serves all social and behavioral science faculty across the UIUC campus, regardless of affiliate status. SBSI does not serve as the home until for tenure-line faculty nor is it a degree-granting unit.

SBSI is organized to serve and be responsive to stakeholder and university social and behavioral science needs and concerns. This is achieved this through a range of activities that engage the social and behavioral research community (e.g. SBSI affiliate annual survey, topical gatherings such as the Future of Work, advanced methodological training.)

SBSI's Advisory Board's role is both advisory and consultative. The board is appointed by the director for staggered three-year terms and are chosen from a range of departments and colleges and schools to reflect the breadth of social and behavioral science across campus. The advisory board serves as a sounding board for SBSI leadership and provides input on SBSI thematic focus, strategic framework and implementation efforts. The board also evaluates and selects the Social and Behavioral Science Impact award recipients.

The SBSI Director is an active participant in the monthly meetings of campus-wide institute and center directors and has frequent one-on-one meetings with key stakeholders (e.g., deans, department heads or chairs, and faculty). These meetings provide opportunities for bi-directional conversations on opportunities for synergy and collaboration.

The SBSI Affiliate Program is open to all tenure-track and non-tenure-track faculty and research staff on the UIUC campus who are actively engaged in social and behavioral science research and who have had some type of involvement with SBSI. They are expected to be active

Administrative, Research or Public Service Unit Application

participants in the social and behavioral science community across campus and to complete a brief annual survey. Affiliates are provided with a 0% appointment which is renewable every five years. Applications are accepted on a rolling basis and approved by the Director.

4. Unit Outcomes

Identify what targets have been set to assess the proposed unit's success in achieving its objectives. Among others, specific performance measures might include: expected research and/or public service products; ratio of external to internal funding for unit; impact of this unit on national, state, regional, and local area organizations, businesses, or communities; and collaborative research product that promotes the Illinois economy.

SBSI uses three central sets of metrics to monitor progress toward meeting its three strategic priorities. First, to identify return on investment, the extent to which our funding programs and proposal development assistance leads to external funding is tracked. Second, SBSI tracks and analyzes short and long-term interactions and involvement of stakeholders, including by discipline and unit, for a wide range of SBSI activities. Third, connections and programs with the public are monitored, checking in with SBSI stakeholders through formal and informal methods. The effectiveness of SBSI will be represented by increased external funding to support social and behavioral science research, teaching, and outreach efforts; increased interdisciplinary research teams and projects including or led by social and behavioral scientists across campus; and increased connections and collaboration between social and behavioral science researchers across campus.

5. Quality Assurance Processes

Briefly describe the processes that will yield evidence to demonstrate the quality of the unit. Address the following elements: evidence that the unit supports the university's mission and statewide goals; evidence that the unit's product or outcomes achieve stated objectives; determination of organizational effectiveness; faculty and staff qualifications and reward structures; determination of adequate support staff, equipment, and other resources; and use of results from evaluations to improve the unit's effectiveness.

SBSI submits an annual report to the OVCRI which includes: 1) overview of the unit's mission and vision; 2) details and outcomes from research, education, and public engagement activities; 3) current staffing assessment and future staffing plans; 4) future opportunities and

threats; 5) annual budget and expenditures; and 6) and future strategic priorities and initiative plans.

Additionally, SBSI holds a planning retreat with staff every summer. The focus of the retreat is to reflect on and assess the previous year's programming using outcome metrics collected throughout the year (see Unit Outcome), consider faculty needs (e.g. using annual SBSI Affiliate survey results, input from annual meetings with deans and directors), and outline changes in existing programming as well as plans for future programming.

6. Facilities (space, equipment, instructional materials)

Describe the available facilities and equipment to develop and maintain high quality in this unit of administration, research, or public service including buildings, classrooms, office space, laboratories and equipment, and other instructional technologies. Summarize information about library resources including a list of key academic journals and other publications that will support this unit and be used by faculty, students, and staff.

SBSI is housed in previously underutilized space in the National Center for Supercomputing Applications (NCSA) Building. The SBSI space has dedicated offices for staff members as well as a small, dedicated meeting space that also provides workspace for interns. In addition, SBSI has access to several large conference rooms which feature state-of-the-art communication and networking capabilities. SBSI has a growing collection of research resources that faculty can draw upon (e.g., methodological training videos, grant application resources, and science communication guidelines).

7. Resources

Indicate the number of students, businesses, industries, and/or other clients to be served by this unit. Include a description of faculty participation and student involvement in the unit if applicable. Provide a narrative budget statement explaining the data in the associated Budget Table. **Include detail describing revenues from governmental grants and contracts private gifts and grants, endowment/investment income, sales and services, and other sources; and expenditures including salaries of faculty, administrative staff, benefits, and other personnel related expenses for the proposed unit; library resources, services, equipment, and facilities.**

SBSI serves the entire social and behavioral science ecosystem across the UIUC campus, which includes over 1,000 diverse researchers from 30 different units. Social and behavioral

Administrative, Research or Public Service Unit Application

science faculty comprise 29% of all faculty on the UIUC campus. Faculty, staff and students are welcome to participate in most SBSI programs and activities regardless of unit affiliation except when programming is targeted at a specific population such as graduate students (e.g., the Policy Research Legislative Program), assistant professors (e.g., a planned emerging investigators academy), or mid-career faculty (e.g., the Partnerships for Evidence-based Public Policy).

Budget Table

Estimated Costs and Sources of Funds for Proposed Unit						
Illinois Higher Education						
		Year of Operation				
		1st Year	2nd Year	3rd Year	4th Year	
Expenditure						
Personnel						
Faculty Count	by # of FTE					
	Personal Services in \$	850,587	850587	850587	850587	
Other Personnel Costs in \$						
Supplies, Services, Equipment ¹ in \$		772000	698650	635350	635350	
Facilities in \$		29300	29300	29300	29300	
	Total	1651887	1578537	1515237	1515237	
Resources						
Current Unit		1400000	1400000	1400000	1400000	
Other Internal Sources ²		250000	250000	130000	130000	
Federal Funds		10000	10000	10000	10000	
Fees, Sales, Other Income		5000	10000	12000	12000	
New State Appropriation ³						
	Total	1665000	1670000	1552000	1552000	
¹ Includes expenditures for library resources.						
² Reallocation within institution from other budgetary unit.						
³ Complete table 2 if greater than zero.						
Note: Do not estimate inflationary factor.						
Narrative must accompany this table						

BUDGET JUSTIFICATION

EXPENSES

Personnel

The budget includes funding for the SBSI Director (50% faculty salary, 2 summer month salary, administrative stipend, and research funds), associate director (1.0 FTE), assistant director of public policy and research (1.0 FTE), senior research development manager (1.0 FTE), research development specialist (1.0 FTE), communication coordinator (1.0 FTE), community engagement

Administrative, Research or Public Service Unit Application specialist (1.0 FTE), business and finance specialist (1.0 FTE), office support specialist (1.0 FTE), senior research associate (academic hourly, 20 hours/week), and a communication intern (undergraduate hourly, 10 hours/week). *No additional staff requested with institute status.*

Programming

Research Support Hub

This budget includes funding for programming to support social and behavioral science research to address societal challenges including the SBSI Small Grant Program, ASCEND (assistant professor professional development program), Cross-Connect (interdisciplinary research program), advanced research methods workshops, and the Social and Behavioral Science Impact Award.

Science for Society Hub

This budget includes funding for programming to support public engagement to amplify the societal impact of the UIUC science enterprise. This includes SBSI's Policy Legislative Research Fellow (PLRF) program, Illinois Science Explorers (I-Sci Explorers; STEM enrichment program for children and families using social and behavioral science principles) program, and our Partnerships for Evidence Based Public Policy (PEPP; mid-career program to support faculty research-practice partnerships).

Interdisciplinary Ecosystem

The budget includes funding for convenings around our five areas of concentration (i.e., technology & society, health & well-being, institutions & organizations, belonging & inclusiveness, and environment & society) to foster collaboration across disciplines. The budget also supports other activities that provide professional development and training for social and behavioral science research and facilitate connections among social and behavioral scientists.

Operations

The budget includes funding to support facilities fees (National Center for Supercomputing Applications), staff professional development, communication, equipment and supplies.

INCOME

Funding for SBSI is provided from a variety of sources which include recurring permanent

budget funds and non-recurring budget funds from the Office of the Provost, funds from other units to support collaborative projects, and gift funds. This funding is augmented by fee-for-service through SBSI's Data and Methods Core and our Science & Society Services, such as the Illinois-Science Explorers program, which provides STEM enrichment to youth using social and behavioral science principles.

While the current portfolio includes a few small external grants (i.e., Department of Justice, American Lung Association, Illinois-Indiana Sea Grant, and Arnold Ventures), plans as an institute include expanding this work and submitting larger external grant proposals through SBSI.

SBSI already has a significant estate gift. The E. R. Engeling and Paula Lynn Engeling Social and Behavioral Research Center Fund is expected to provide an endowment of approximately \$5M for SBSI. In addition, recent advancement efforts yielded a donation of over \$1.2M for the Bill and Julie Kellner Center for Neurogenomics, Behavior and Society. The center is housed in the Institute for Genomic Biology but is jointly administered with SBSI and the UIUC School of Social Work, both of which were actively involved in advancement efforts. SBSI continues to work with Advancement to identify and secure additional philanthropic support.

8. The Illinois Public Agenda for College and Career Success

IBHE is charged to develop a strategic plan to address the present and future aims and needs and requirements of higher education in Illinois (110 ILCS 205/6) (from Ch. 144, par. 186) Sec. 6).

Illinois Administrative Code: 1050.30(a)(6): *A) The unit of instruction, research or public service is educationally and economically justified based on the educational priorities and needs of the citizens of Illinois*

Respond to the following questions about how the proposed program will support the three goals of ***A Thriving Illinois: Higher Education Paths to Equity, Sustainability, and Growth*** Strategic Plan.

- Equity: Close the equity gaps for students who have historically been left behind
- Sustainability: Build a stronger financial future for individuals and institutions
- Growth: Increase talent and innovation to drive economic growth

(For more information about each of the three goals of the ***A Thriving Illinois: Higher Education Paths to Equity, Sustainability, and Growth*** Strategic Plan, go to the IBHE website: <https://ibhestrategicplan.ibhe.org/>).

Equity

8a. Describe institutional-level plans to close equity gaps in access, progression, completion, and attainment and the implications for the proposed program. More specifically, provide institutional-level plans for attracting, recruiting, retaining, and completing a diverse group of students including working adults, students of color, transfer and low-income students and implications for the proposed program. Explain how progress will be monitored. [See Equity Strategy #2]

The goals of IBHE's *Thriving Illinois* are consistent with the goals SBSI.

8a. An overarching goal in all SBSI's work is to create a more diverse, equitable, and inclusive research, educational, and public policy landscape at the University of Illinois Urbana-Champaign that will help close equity gaps among the citizens across Illinois, within our urban and rural communities, and beyond. SBSI will monitor progress towards this through efforts in the proposed institute's research (e.g. small grants awarded), education (e.g., Policy Legislative Research Fellow (PLRF) projects), and public engagement (e.g., Illinois Science Explorers (I-Sci Explorers) programs. There are several ways that SBSI contributes to efforts to attract and retain a wide range of faculty and staff. Numerous and varied opportunities for professional development (e.g., ASCEND assistant professor professional development program, Assistant Professor Gatherings) are offered, and SBSI provides support for research (e.g., one-on-one research development support, small grants for research, NSF Career Club). Involvement in SBSI programming is continually assessed to ensure equitable representation.

8b. Describe program and institution-based high-impact practices and wrap-around student support services ensuring equitable access and success for students enrolled in the proposed program.[See Equity Strategy #1]

8b. While not a degree-granting unit, SBSI offers numerous opportunities for students such as working as research assistants on faculty-led SBSI-funded small grants, access to advanced methodical training, and serving as a research policy fellow in local legislators' offices. These opportunities support an inclusive and equitable learning community for all.

8c. Explain institutional strategies being implemented to increase and retain faculty, staff, and administrators of color and the implications for the proposed program. Explain how progress will be monitored. [See Equity Strategy #3]

8c. There are several ways that SBSI contributes to efforts to attract and retain a wide range of faculty and staff. Numerous and varied opportunities for high-quality professional development (e.g., ASCEND professional development program for assistant professors) are offered. SBSI also provides support for research support, activities and professional development (e.g., one-on-one research development support, small grants for research, NSF Career Club). Additionally, our affiliate program provides opportunities for faculty to connect to the broader social and behavioral ecosystem and make connections across campus. Involvement in SBSI programming is continually assessed to ensure equitable representation. These efforts dovetail with the investments that the Office of the Provost make in faculty development.

Administrative, Research or Public Service Unit Application

8d. Describe strategies and initiatives the institution plans to implement that makes the proposed program and college more generally affordable for students and their families, including those who have been historically underserved. [See Sustainability Strategy #1]

8d. While SBSI is not a degree granting unit, there are several ways in which their efforts support streamlining of services and increasing external funding (e.g., grants, philanthropic donations) which will ultimately lead to making college more affordable. This includes working closely with other interdisciplinary institutes and centers across the UIUC campus to identify and capitalize on opportunities to collaborate and to avoid duplication. The SBSI Director meets monthly with other OVCRI based institute and center directors. Additionally, SBSI is actively engaged with Advancement at UIUC to secure additional philanthropic support.

8e. Provide tuition cost analysis for comparable programs and institutions in Illinois.

Growth

8f. Provide a supply and demand analysis for the proposed program that, at minimum, does the following:

- 1) Provides evidence of student interest in the proposed program including any strategies to incentivize students to stay in Illinois. [See Growth Strategy #3]
- 2) Identifies and provides evidence of a high-quality credential with viability for future careers. [See Growth Strategy #3]

8e & 8f. N/A as SBSI is not a degree-granting unit.

8g. Explain how the program engaged with business and industry in its development and how it will spur the state's economy by leveraging partnerships with local, regional, and state industry, business leaders and employers. [See Growth Strategy #3]

8g. There are several ways in which SBSI helps to leverage partnerships with local, regional and state industry, business leaders and employer networks. SBSI actively assists faculty in creating and maintaining partnerships and collaborations for their research and public policy efforts as needed. Through policy-focused programming SBSI actively supports efforts to engage with these networks and help address the needs of the citizens of Illinois. One program in particular, the (I-Sci Explorers) program which provides STEM education for children from the broader Champaign-Urbana area, dovetails with the Campus-Community Compact (Compact), a major initiative of the Community Action and Public Engagement (CAPE) Committee of Illinois' Chancellor's Call to Action to Address Racism and Social Injustice.

8h. Describe how the proposed program will expand access and opportunities for students through high-impact practices including research opportunities, internships, apprenticeships, career pathways and other field experiences. [See Growth Strategy #6]

8h. SBSI is a resource and support system for graduate and undergraduate students as a result of their involvement with SBSI funded research and public engagement, as well as advanced methodological training. This dovetails with efforts of the Office of Undergraduate Research which seeks to provide support and opportunities for undergraduates to participate in research on the Urbana-Champaign campus.

8i. Explain how the proposed program will expand its models of teaching and learning, research, and/or public service and outreach that provide opportunity for students to succeed in the work of the future. [See Growth Strategy #6]

8i. SBSI has been on the forefront of providing opportunities for faculty to engage in cutting-edge topics that have the potential to have an impact on teaching, learning, research and public service. For instance, SBSI holds a Future of Work symposium annually to gather researchers and graduate students from across campus to discuss topics such as the changing nature of work and the impact of these changes on organizations, the workforce, and society. SBSI also holds an advanced methodological training for faculty, research staff, and students on cutting edge topics (e.g. Machine Learning for Social & Behavioral Science). Collectively, these efforts will help prepare students and faculty for future success. SBSI continuously looks for ways to collaborate and connect with U of I Extension.

8j. Beyond workforce need, describe how the program broadly addresses societal needs (e.g., cultural or liberal arts contribution, lifelong learning of Illinois residents, or civic participation).

8j. SBSI's Science for Society Hub is designed to maximize the public impact of research to broadly address societal needs. This is accomplished through innovative support for evidence-based public engagement and research-practice partnerships that bridge science and society. This includes program such as the PLRF program, Partnerships for Evidence-based Public Policy program, and the I-Sci Explorers program. Collectively, SBSI's efforts support the IBHE's Core Principles of reinforcing and promoting the public good.



UNIVERSITY LIBRARY

Juanita J. & Robert E. Simpson
Dean of Libraries & University Librarian
230 Main Library, MC-522
1408 W. Gregory Drive
Urbana, IL 61801

September 3, 2025

BRENDA DAVIS KOESTER

Associate Director, Center for Social & Behavioral Science
Sent electronically

Dear Brenda,

On behalf of the University Library, I write in support of the proposal to establish the Social & Behavioral Science Institute (SBSI) as a permanent institute within the Office of the Vice Chancellor for Research. Since the Center for Social and Behavioral Sciences' inception, the University Library faculty have engaged with the Center for Social & Behavioral Sciences' developing suite of programs, and see strong opportunities for deepening and expanding this collaboration.

As we discussed the current SBSI proposal among our faculty, they highlighted a desire for a formal liaison relationship between the University Library and the SBSI, and I understand that subsequent conversations between you and Tom Teper touched on starting that in the coming months. We see this as particularly valuable for developing workshops and programming; establishing mechanisms for housing, discovering, and delivering commercial data that may be shared among researchers across campus; and harmonizing the development of services.

The proposed SBSI encourages a level of collaboration in the Social and Behavioral Sciences that those of us in the University Library welcome and applaud. As the flagship state institution, it is critical to our land grant mission that the University be directly engaged in providing both a high-quality education and the vital, thoughtful sort of analysis that aids decision-makers in Illinois. The SBSI is a step toward better fulfilling that mission, and the University Library fully supports this development.

Library faculty look forward to collaborating as you transition from the Center for Social & Behavioral Sciences into the Social and Behavioral Science Institute. I look forward to discussing potential avenues for collaboration with the emerging institute.

Sincerely,

A handwritten signature in black ink, appearing to read 'C Stewart', written in a cursive, flowing style.

Claire Stewart

Juanita J. and Robert E. Simpson Dean of Libraries and University Librarian

September 4, 2025

Eva Pomerantz
Center for Social and Behavioral Sciences
1205 W Clark Street
Urbana, IL 61801

Dear Professor Pomerantz,

I am writing to express strong support for the proposal to elevate the Center for Social and Behavioral Science (CSBS) to the status of a permanent institute at the University of Illinois Urbana-Champaign.

Since its inception as an initiative in 2019, following a recommendation from a chancellor- and provost-charged task force, the CSBS has demonstrated remarkable growth in both impact and scale. It has become a vital interdisciplinary hub, uniquely positioned among Illinois' research units to foster connections within the social and behavioral sciences, as well as across other disciplines and with the broader public.

With over 1,000 faculty and staff from more than 30 units, spanning every college and school on campus, CSBS' reach and influence reflects the breadth and depth of social and behavioral science scholarship at Illinois.

One of CSBS's most effective programs, its small grant initiative, has supported over 130 researchers from more than 40 campus units. This program has yielded an impressive 25:1 return on investment from external grant funding.

CSBS researchers contribute critical context for — and solutions to — many of society's most pressing challenges. Their work provides essential insights that shape policy, drive innovation, and improve lives from the local to the global. Elevating the CSBS to the permanent Social and Behavioral Science Institute (SBSI), in alignment with the university's commitment to fostering interdisciplinary collaboration, will play a vital role in advancing our mission of transformative impact.

I wholeheartedly support this proposal for consideration.

Sincerely,



John Coleman
Provost and Executive Vice Chancellor for Academic Affairs

September 4, 2025

Dear Professor Pomerantz:

I write in very strong support of establishing the Social & Behavioral Science Institute (SBSI) at the University of Illinois Urbana-Champaign (Illinois). I have watched this area nucleate and grow over the past ten years ago - first as an initiative, then embraced by the campus "Next 150" strategic plan as the Center for Social and Behavioral Sciences (CSBS), and now as this discipline and its faculty that span numerous units is flourishing, it seeks to advance to institute status. There couldn't be a better time! Our campus has a pressing strategic opportunity for an institute to support the 1,000+ faculty and other researchers engaged in the social and behavioral sciences (SBS) across more than 30 units residing in every college and school. The SBSI will continue to strengthen collaboration and research in SBS disciplines, as well as provide essential resources, expert personnel, and proposal development support, similar to that provided by other campus-reporting research institutes that grow our research portfolio and impact.

Campus-reporting research institutes at Illinois, such as the Beckman Institute for Advanced Science and Technology, the Carl R. Woese Institute for Genomic Biology, and the Humanities Research Institute, to name a few, play a vital role in advancing scholarship, enhancing the campus research enterprise, and fostering meaningful public and community engagement led by and for the benefit of our faculty and staff across campus and the communities that we serve. The research institutes provide critical hubs to educate and train our future workforce and its leaders, while also facilitating dialogue with other stakeholders to shape societal progress. Faculty benefit from the breadth and depth of resources that the institutes offer, including seed grants, research development personnel with disciplinary expertise, sponsored convenings, and engagement activities. These activities, developed and administered by the research institutes, facilitate internal campus collaborations, partnerships with the local community, and with external constituents, such as governmental organizations, nonprofit organizations, legislative members, and corporations. They deliver on our federal partnership to advance the national research enterprise in truly meaningful ways. Establishing the SBSI strategically addresses current aspirations and strategic opportunities, strengthening research and collaboration across the SBS, supporting connections with peers across disciplines, and catalyzing partnerships and joint projects beyond the existing research institutes. Importantly, the SBS is threaded across campus to inform research projects from engineering to agriculture to chemistry about what will be transformative to society and the human perspective.

Suffice it to say that I enthusiastically support this effort to develop an institute focused on the social and behavioral sciences. I am eager to contribute to achieving this critical goal and stand ready to meet to discuss how to advance this process.

Sincerely,



Susan A. Martinis
Vice Chancellor for Research & Innovation

College/School Deans Letters of Support

- Dean Rashid Bashir, Grainger College of Engineering
- Dean German Bollero, College of Agriculture, Consumer & Environmental Sciences
- Dean Brooke W. Elliott, Gies College of Business
- Dean Emily Knox, School of Information Sciences
- Dean Benjamin Lough, School of Social Work
- Dean Cheryl Hanley-Maxwell, College of Applied Health Sciences
- Dean Chrystalla Mouza, College of Education
- Dean Venetria K. Patton, College of Liberal Arts & Sciences
- Dean Jake Pinholster, College of Fine and Applied Arts
- Dean Simon Restubog, School of Labor and Employment Relations
- Dean Tracy Sulkin, College of Media

From: "Bashir, Rashid" <rbashir@illinois.edu>

Date: September 3, 2025 at 10:45:55 PM CDT

To: "Pomerantz, Eva Marie" <pomerntz@illinois.edu>

Subject: Re: Please Provide Your Support for the Establishment of the Social & Behavioral Science Institute

Dear Eva, yes i am enthusiastically supportive. thanks for your leadership.

regards

Rashid

+++++

Rashid Bashir, Ph.D.

Dean, The Grainger College of Engineering

Grainger Distinguished Chair in Engineering, Professor of Bioengineering,

University of Illinois at Urbana-Champaign

306 Engineering Hall, MC-266

1308 W. Green Street, Urbana, IL 61801

(217) 333-2150

<https://engineering.illinois.edu/>

Research Page: <http://libna.mntl.illinois.edu/>

+++++



August 28, 2025

Dear Dr. Pomerantz,

As Dean of the College of Agricultural, Consumer and Environmental Sciences (ACES), I am writing to express my strong support for the proposal to establish the Social & Behavioral Science Institute (SBSI) as a permanent institute within the Office of Vice Chancellor for Research and Innovation (OVCRI)

At ACES, we are committed to discovering, advancing and integrating new knowledge to ensure nutritious and safe food, foster sustainable and innovative agriculture, build strong and economically resilient families and communities, and promote the environmentally responsible use of natural resources for the benefit of Illinois and the world. The social and behavioral sciences are integral to achieving these goals.

I am confident that SBSI will play a pivotal role in elevating the social and behavioral sciences—not only for faculty in ACES but across our entire campus. Our faculty have already benefited significantly from the affiliate program, research development support services, and the institute's leadership in bringing researchers together to address some of society's most pressing challenges. ACES is deeply grateful for these contributions, and we look forward to expanding collaborations with SBSI in the years ahead.

I fully endorse your proposal for institute status and wish you every success. Please do not hesitate to let me know if I can provide further support for this important effort.

Sincerely,

Germán Bollero
Professor and Dean
Robert A. Easter Chair

From: [Pomerantz, Eva Marie](#)
To: [Koester, Brenda Davis](#)
Subject: FW: Please Provide Your Support for the Establishment of the Social & Behavioral Science Institute
Date: Wednesday, September 3, 2025 10:39:24 AM
Attachments: [image001\[85\].png](#)

EVA M. POMERANTZ (SHE/HER)

Director, Center for Social & Behavioral Science
Professor, Department of Psychology
217-244-2538 | pomerantz@illinois.edu
csbs.research.illinois.edu/

From: Elliott, W Brooke <wbe@illinois.edu>
Date: Thursday, August 28, 2025 at 1:53 PM
To: Pomerantz, Eva Marie <pomerantz@illinois.edu>
Subject: Re: Please Provide Your Support for the Establishment of the Social & Behavioral Science Institute

Hi – I am supportive.

Best,
Brooke

Get [Outlook for Mac](#)

From: Pomerantz, Eva Marie <pomerantz@illinois.edu>
Date: Thursday, August 28, 2025 at 10:25 AM
To: Pomerantz, Eva Marie <pomerantz@illinois.edu>
Subject: Please Provide Your Support for the Establishment of the Social & Behavioral Science Institute

Dear Dean Colleagues,

I am writing to you to ask for your support for the establishment of a permanent institute which will be called the Social & Behavioral Science Institute (SBSI) and will be housed in the Office of the Vice Chancellor for Research and Innovation (OVCRI). **To provide support, you simply need to respond to this email with an indication of your support by Thursday, September 4th.**

From: [Pomerantz, Eva Marie](#)
To: [Koester, Brenda Davis](#)
Subject: FW: Please Provide Your Support for the Establishment of the Social & Behavioral Science Institute
Date: Wednesday, September 3, 2025 9:45:48 AM
Attachments: [image001\[85\].png](#)

EVA M. POMERANTZ (SHE/HER)

Director, Center for Social & Behavioral Science
Professor, Department of Psychology
217-244-2538 | pomerantz@illinois.edu
csbs.research.illinois.edu/

From: Knox, Emily Joyce Magdelyn <knox@illinois.edu>
Date: Thursday, August 28, 2025 at 10:35 AM
To: Pomerantz, Eva Marie <pomerantz@illinois.edu>
Subject: Re: Please Provide Your Support for the Establishment of the Social & Behavioral Science Institute

I support this proposal.

Emily

Emily Joyce Magdelyn Knox

Interim Dean and Professor, School of Information Sciences
Faculty Affiliate, Informatics

University of Illinois Urbana-Champaign
332 LIS | M/C 493
Champaign, IL 61820
217.300.0212 | Google Voice: 773.245.6427
knox@illinois.edu
emilyknox.net

From: [Pomerantz, Eva Marie](#)
To: [Koester, Brenda Davis](#)
Subject: FW: Please Provide Your Support for the Establishment of the Social & Behavioral Science Institute
Date: Wednesday, September 3, 2025 9:42:18 AM
Attachments: [image001\[85\].png](#)

EVA M. POMERANTZ (SHE/HER)

Director, Center for Social & Behavioral Science
Professor, Department of Psychology
217-244-2538 | pomerntz@illinois.edu
csbs.research.illinois.edu/

From: Lough, Benjamin James <bjlough@illinois.edu>
Date: Thursday, August 28, 2025 at 3:20 PM
To: Pomerantz, Eva Marie <pomerntz@illinois.edu>
Subject: Re: Please Provide Your Support for the Establishment of the Social & Behavioral Science Institute

Hi Eva,

I'm happy to support this move. Seems like the right step, since the future SBSI is already working across colleges and serving as a real campus-level hub. Having the "institute" designation makes that more clear – and likely will have some added weight with collaborators and funders.

My best,
Ben

From: Pomerantz, Eva Marie <pomerntz@illinois.edu>
Date: Thursday, August 28, 2025 at 10:25 AM
To: Pomerantz, Eva Marie <pomerntz@illinois.edu>
Subject: Please Provide Your Support for the Establishment of the Social & Behavioral Science Institute

Dear Dean Colleagues,

I am writing to you to ask for your support for the establishment of a permanent institute which will be called the Social & Behavioral Science Institute (SBSI) and will be housed in the Office of the Vice Chancellor for Research and Innovation (OVCRI). **To provide support, you simply need to respond to this email with an indication of your support by Thursday, September 4th.**

From: [Pomerantz, Eva Marie](#)
To: [Koester, Brenda Davis](#)
Subject: FW: Please Provide Your Support for the Establishment of the Social & Behavioral Science Institute
Date: Wednesday, September 3, 2025 9:43:19 AM
Attachments: [image001.png](#)

EVA M. POMERANTZ (SHE/HER)

Director, Center for Social & Behavioral Science
Professor, Department of Psychology
217-244-2538 | pomerntz@illinois.edu
csbs.research.illinois.edu/

From: Hanley-Maxwell, Cheryl D <cherylhm@illinois.edu>
Date: Thursday, August 28, 2025 at 12:00 PM
To: Pomerantz, Eva Marie <pomerntz@illinois.edu>
Subject: RE: Please Provide Your Support for the Establishment of the Social & Behavioral Science Institute

Hello Eva – I am absolutely in support of this!

Cheryl

Cheryl Hanley-Maxwell, Dean
College of Applied Health Sciences
1008 Huff Hall, MC-586
1206 S. Fourth Street
Champaign, IL 61820
(217) 333-2129 (Robbin)
(217) 333-0404 (fax)

Human kindness has never weakened the stamina or softened the fiber of a free people. A nation does not have to be cruel to be tough. President Franklin D. Roosevelt

Under the Illinois Freedom of Information Act (FOIA), any written communication to or from University employees regarding University business is a public record and may be subject to public disclosure.

From: Pomerantz, Eva Marie <pomerntz@illinois.edu>
Sent: Thursday, August 28, 2025 10:25 AM
To: Pomerantz, Eva Marie <pomerntz@illinois.edu>
Subject: Please Provide Your Support for the Establishment of the Social & Behavioral Science Institute



College of Education

Office of the Dean
38 Education Building, MC-708
1310 S. Sixth St.
Champaign, IL 61820

September 2, 2025

Dr. Eva Pomerantz
Social and Behavioral Science Institute
Via email: pomerntz@illinois.edu

Dear Dr. Pomerantz,

As the Dean of the College of Education, I am writing to offer my strong support for the proposal to establish the Social & Behavioral Science Institute (SBSI) as a permanent institute within the Office of the Vice Chancellor for Research and Innovation (OVCRI).

The College of Education at the University of Illinois Urbana-Champaign is one of the first land-grant schools of education, revered for its groundbreaking research, preparation of educator-leaders and worldwide impact. Our faculty, many of whom are social and behavioral scientists, have benefited from your services and programming. In particular, the research development support and events that help to connect faculty with others across campus is invaluable. SBSI is well-poised to make a significant impact across campus to elevate the social and behavioral sciences and to foster impactful interdisciplinary collaborations.

I wish you the best with your proposal for institute status. Please let me know if there is anything else I do to help support your application.

Sincerely,

A handwritten signature in cursive script that reads 'C. Mouza'.

Chrystalla Mouza
Dean and Gutsell Professor

September 3, 2025

Dear Dr. Pomerantz,

As the Dean of the College of Liberal Arts and Sciences (LAS), I am writing to offer my strong support for the proposal to establish the Social & Behavioral Science Institute (SBSI) as a permanent institute within the Office of the Vice Chancellor for Research and Innovation (OVCRI).

LAS is the largest college at the University of Illinois Urbana-Champaign and home to the largest number of social and behavioral scientists on our campus. LAS fosters a deep appreciation for science, culture, and society. We navigate the intersections of various fields to achieve personal breakthroughs, establish meaningful connections, and make a difference.

SBSI will continue to play a critical role in elevating the social and behavioral sciences on our campus. Our faculty will continue to rely on the resources and services you offer such as research development support, professional development opportunities, and topical events that bring scholars together for interdisciplinary collaboration.

I wish you the best with your proposal for institute status. Please let me know if there is anything else I do to help support your application.

Sincerely,



Venetria K. Patton
Harry E. Preble Dean

From: [Pomerantz, Eva Marie](#)
To: [Koester, Brenda Davis](#)
Subject: FW: Please Provide Your Support for the Establishment of the Social & Behavioral Science Institute
Date: Wednesday, September 3, 2025 9:43:18 AM
Attachments: [image001\[85\].png](#)

EVA M. POMERANTZ (SHE/HER)

Director, Center for Social & Behavioral Science
Professor, Department of Psychology
217-244-2538 | pomerntz@illinois.edu
csbs.research.illinois.edu/

From: Pinholster, Jacob D <jakepin@illinois.edu>
Date: Thursday, August 28, 2025 at 10:38 AM
To: Pomerantz, Eva Marie <pomerntz@illinois.edu>
Subject: Re: Please Provide Your Support for the Establishment of the Social & Behavioral Science Institute

Thanks, Eva. I wholeheartedly support this change.

Warmly,
Jake

Jake Pinholster
Dean, College of Fine and Applied Arts
University of Illinois Urbana-Champaign
Mobile: +1 (917) 903-6210
jakepin@illinois.edu
faa.illinois.edu

Pronouns: he/him/his

Sent from a mobile device.

On Aug 28, 2025, at 10:25 AM, Pomerantz, Eva Marie <pomerntz@illinois.edu> wrote:

Dear Dean Colleagues,

I am writing to you to ask for your support for the establishment of a permanent institute which will be called the Social & Behavioral Science Institute (SBSI) and

From: [Pomerantz, Eva Marie](#)
To: [Koester, Brenda Davis](#)
Subject: FW: Please Provide Your Support for the Establishment of the Social & Behavioral Science Institute
Date: Wednesday, September 3, 2025 9:43:19 AM
Attachments: [image002.png](#)
[image003.png](#)
[image004.png](#)
[image005.png](#)
[image006.png](#)
[image007.png](#)

EVA M. POMERANTZ (SHE/HER)

Director, Center for Social & Behavioral Science
Professor, Department of Psychology
217-244-2538 | pomerantz@illinois.edu
csbs.research.illinois.edu/

From: Restubog, Simon <simonldr@illinois.edu>
Date: Thursday, August 28, 2025 at 10:52 AM
To: Pomerantz, Eva Marie <pomerantz@illinois.edu>
Subject: RE: Please Provide Your Support for the Establishment of the Social & Behavioral Science Institute

Hi Eva,
I hope you had a restorative summer.

I strongly and enthusiastically support this initiative.

Cheers,
Simon

Simon Restubog, PhD

Interim Dean and Professor

University of Illinois Urbana-Champaign
School of Labor and Employment Relations
504 E. Armory Avenue
Room 147 | 504
Champaign, IL 61820
(217) 333-1480 | simonldr@illinois.edu
www.ler.illinois.edu

From: [Pomerantz, Eva Marie](#)
To: [Koester, Brenda Davis](#)
Subject: FW: Please Provide Your Support for the Establishment of the Social & Behavioral Science Institute
Date: Wednesday, September 3, 2025 10:39:32 AM
Attachments: [image001.png](#)

EVA M. POMERANTZ (SHE/HER)

Director, Center for Social & Behavioral Science
Professor, Department of Psychology
217-244-2538 | pomerntz@illinois.edu
csbs.research.illinois.edu/

From: Sulkin, Tracy <tsulkin@illinois.edu>
Date: Thursday, August 28, 2025 at 8:02 PM
To: Pomerantz, Eva Marie <pomerntz@illinois.edu>
Subject: RE: Please Provide Your Support for the Establishment of the Social & Behavioral Science Institute

Thanks, Eva. I am writing to share my enthusiastic support for the proposal to establish SBSI as a permanent institute.

Best,
Tracy

From: Pomerantz, Eva Marie <pomerntz@illinois.edu>
Sent: Thursday, August 28, 2025 10:25 AM
To: Pomerantz, Eva Marie <pomerntz@illinois.edu>
Subject: Please Provide Your Support for the Establishment of the Social & Behavioral Science Institute

Dear Dean Colleagues,

I am writing to you to ask for your support for the establishment of a permanent institute which will be called the Social & Behavioral Science Institute (SBSI) and will be housed in the Office of the Vice Chancellor for Research and Innovation (OVCRI). **To provide support, you simply need to respond to this email with an indication of your support by Thursday, September 4th.**

In case you have questions about . . .

Office of the Vice Chancellor for Research & Innovation - Institute/Center Directors Letters of Support

- Director Rohit Bhargava, Cancer Center at Illinois
- Director Stephen Boppart, Interdisciplinary Health Sciences Institute
- Director Antoinette Burton, Humanities Research Institute
- Director William Gropp, National Center for Supercomputing Applications
- Director Madhu Khanna, Institute for Sustainability, Energy, and Environment
- Director Praveen Kumar, Prairie Research Institute
- Director Steve Maren, Beckman Institute
- Director Gene Robinson, Institute for Genomic Biology

From: [Pomerantz, Eva Marie](#)
To: [Koester, Brenda Davis](#)
Subject: FW: Please Provide Your Support for the Establishment of the Social & Behavioral Science Institute
Date: Wednesday, September 3, 2025 9:43:18 AM
Attachments: [image001.png](#)

EVA M. POMERANTZ (SHE/HER)

Director, Center for Social & Behavioral Science
Professor, Department of Psychology
217-244-2538 | pomerantz@illinois.edu
csbs.research.illinois.edu/

From: Bhargava, Rohit <rxb@illinois.edu>
Date: Thursday, August 28, 2025 at 10:54 AM
To: Pomerantz, Eva Marie <pomerantz@illinois.edu>
Subject: RE: Please Provide Your Support for the Establishment of the Social & Behavioral Science Institute

Hi Eva,

CCIL supports the formation of SBSI.

Thanks,
Rohit

From: Pomerantz, Eva Marie <pomerantz@illinois.edu>
Sent: Thursday, August 28, 2025 10:21 AM
To: Pomerantz, Eva Marie <pomerantz@illinois.edu>
Subject: Please Provide Your Support for the Establishment of the Social & Behavioral Science Institute

Dear Institute Director Colleagues,

I am writing to you to ask for your support for the establishment of a permanent institute which will be called the Social & Behavioral Science Institute (SBSI) and will be housed in the Office of the Vice Chancellor for Research and Innovation (OVCRI). **To provide support, you simply need to respond to this email with an indication of your support by Thursday, September 4th.**

In case you have questions about . . .

August 28, 2025

Dear Dr. Pomerantz,

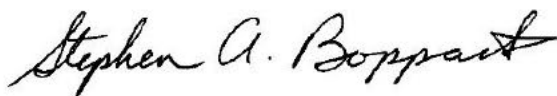
As the Director of the Interdisciplinary Health Sciences Institute (IHSI), I am writing to offer my strong support for the proposal to establish the Social & Behavioral Science Institute (SBSI) as a permanent institute within the Office of the Vice Chancellor for Research and Innovation (OVCRI).

IHSI accelerates research and innovation which addresses personal, public, and planetary health challenges. We have been a central part of health sciences research on the Illinois campus and create opportunities that strengthen our research enterprise and foster innovation across campus.

SBSI will help the University of Illinois Urbana-Champaign become a national leader in excellence in social and behavioral science. We look forward to continuing our collaborations on programming and supporting evidence-based public engagement and research-practice partnerships that bridge science and society.

I wish you the best with your proposal for institute status. Please let me know if there is anything else I can do to help support your application.

Sincerely,



Stephen A. Boppart, M.D., Ph.D.
Director, IHSI

From: [Pomerantz, Eva Marie](#)
To: [Koester, Brenda Davis](#)
Subject: FW: Please Provide Your Support for the Establishment of the Social & Behavioral Science Institute
Date: Wednesday, September 3, 2025 9:46:24 AM
Attachments: [image001.png](#)

EVA M. POMERANTZ (SHE/HER)

Director, Center for Social & Behavioral Science
Professor, Department of Psychology
217-244-2538 | pomerantz@illinois.edu
csbs.research.illinois.edu/

From: Burton, Antoinette M <aburton@illinois.edu>
Date: Friday, August 29, 2025 at 4:21 PM
To: Pomerantz, Eva Marie <pomerantz@illinois.edu>
Subject: Re: Please Provide Your Support for the Establishment of the Social & Behavioral Science Institute

I am fully in support of advancing the Center for Cultural and Behavioral Sciences to institute status. The interdisciplinary work and collaborative orientations of the Center have been exemplary, affording scholars across the whole campus opportunities to participate in or to witness what happens when startling combinations of ideas and partnerships are brought into being, carefully cultivated, and mobilized for societal impact and change. Illinois is fortunate to have Eva Pomerantz at the helm of this enterprise, not least because she brings an original and distinctive vision to the Center's projects, which in turn promises a bright future for innovative interdisciplinary ground in social and behavioral science research through the new institute.

Antoinette Burton
Director, Humanities Research Institute

From: "Pomerantz, Eva Marie" <pomerantz@illinois.edu>
Date: Thursday, August 28, 2025 at 10:21 AM
To: "Pomerantz, Eva Marie" <pomerantz@illinois.edu>
Subject: Please Provide Your Support for the Establishment of the Social & Behavioral Science Institute

Dear Institute Director Colleagues,

I am writing to you to ask for your support for the establishment of a permanent institute which

From: [Pomerantz, Eva Marie](#)
To: [Koester, Brenda Davis](#)
Subject: FW: Please Provide Your Support for the Establishment of the Social & Behavioral Science Institute
Date: Wednesday, September 3, 2025 9:42:18 AM
Attachments: [image001\[39\].png](#)

EVA M. POMERANTZ (SHE/HER)

Director, Center for Social & Behavioral Science
Professor, Department of Psychology
217-244-2538 | pomerntz@illinois.edu
csbs.research.illinois.edu/

From: Gropp, William D <wgropp@illinois.edu>
Date: Monday, September 1, 2025 at 3:21 PM
To: Pomerantz, Eva Marie <pomerntz@illinois.edu>
Subject: Re: Please Provide Your Support for the Establishment of the Social & Behavioral Science Institute

Hi Eva,
I am in support of this. Good luck!
Bill

William Gropp
Director, NCSA
Grainger Distinguished Chair in Engineering
Siebel School of Computing and Data Science
University of Illinois Urbana-Champaign
<https://wgropp.cs.illinois.edu>

From: Pomerantz, Eva Marie <pomerntz@illinois.edu>
Date: Thursday, August 28, 2025 at 10:21 AM
To: Pomerantz, Eva Marie <pomerntz@illinois.edu>
Subject: Please Provide Your Support for the Establishment of the Social & Behavioral Science Institute

Dear Institute Director Colleagues,

I am writing to you to ask for your support for the establishment of a permanent institute which will be called the Social & Behavioral Science Institute (SBSI) and will be housed in the Office of the Vice Chancellor for Research and Innovation (OVCRI). **To provide support, you simply need to respond to this email with an indication of your support by Thursday, September 4th**

From: [Pomerantz, Eva Marie](#)
To: [Koester, Brenda Davis](#)
Subject: FW: Please Provide Your Support for the Establishment of the Social & Behavioral Science Institute
Date: Wednesday, September 3, 2025 9:45:56 AM
Attachments: [image002.png](#)
[image003.png](#)

EVA M. POMERANTZ (SHE/HER)

Director, Center for Social & Behavioral Science

Professor, Department of Psychology

217-244-2538 | pomerantz@illinois.edu

csbs.research.illinois.edu/

From: Khanna, Madhu <khanna1@illinois.edu>

Date: Thursday, August 28, 2025 at 10:32 AM

To: Pomerantz, Eva Marie <pomerantz@illinois.edu>

Subject: RE: Please Provide Your Support for the Establishment of the Social & Behavioral Science Institute

Hi Eva

I support the establishment of SBSI.

Best wishes

Madhu

Madhu Khanna

Pronouns: she, her

ACES Distinguished Professor in Environmental Economics

Alvin H. Baum Family Chair and Director, Institute for Sustainability, Energy and Environment

Director, Center for Economics of Sustainability

University of Illinois, Urbana-Champaign

1101 W. Peabody Drive (NSRC), Suite 350

MC-635

Urbana, IL 61801

email: khanna1@illinois.edu; phone: 217-333-5176; fax: 217-333-5538

<http://ace.illinois.edu/directory/madhu-khanna>

<https://scholar.google.com/citations?user=LPH4gbUAAAAJ&hl=en>

<https://illinois.zoom.us/j/2173335176?pwd=Ri8rTzQ0S1RxZHpY2tEWVdaSlhtZz09>

From: [Pomerantz, Eva Marie](#)
To: [Koester, Brenda Davis](#)
Subject: FW: Please Provide Your Support for the Establishment of the Social & Behavioral Science Institute
Date: Wednesday, September 3, 2025 9:43:17 AM
Attachments: [image001\[39\].png](#)

EVA M. POMERANTZ (SHE/HER)

Director, Center for Social & Behavioral Science
Professor, Department of Psychology
217-244-2538 | pomerntz@illinois.edu
csbs.research.illinois.edu/

From: Kumar, Praveen <kumar1@illinois.edu>
Date: Thursday, August 28, 2025 at 10:45 AM
To: Pomerantz, Eva Marie <pomerntz@illinois.edu>
Subject: Re: Please Provide Your Support for the Establishment of the Social & Behavioral Science Institute

I support, Eva.

Get [Outlook for Android](#)

From: Pomerantz, Eva Marie <pomerntz@illinois.edu>
Sent: Thursday, August 28, 2025 10:21:02 AM
To: Pomerantz, Eva Marie <pomerntz@illinois.edu>
Subject: Please Provide Your Support for the Establishment of the Social & Behavioral Science Institute

Dear Institute Director Colleagues,

I am writing to you to ask for your support for the establishment of a permanent institute which will be called the Social & Behavioral Science Institute (SBSI) and will be housed in the Office of the Vice Chancellor for Research and Innovation (OVCRI). **To provide support, you simply need to respond to this email with an indication of your support by Thursday, September 4th.**

In case you have questions about . . .

Why are you undertaking this designation now? Based on our 5-year review and the subsequent strategic planning process, the Vice Chancellor of Research and Innovation (VCRI) and Provost recommended a move to permanent institute status.

From: [Pomerantz, Eva Marie](#)
To: [Koester, Brenda Davis](#)
Subject: FW: Please Provide Your Support for the Establishment of the Social & Behavioral Science Institute
Date: Wednesday, September 3, 2025 9:43:17 AM
Attachments: [image001\[39\].png](#)

EVA M. POMERANTZ (SHE/HER)

Director, Center for Social & Behavioral Science
Professor, Department of Psychology
217-244-2538 | pomerantz@illinois.edu
csbs.research.illinois.edu/

From: Maren, Steve <smaren@illinois.edu>
Date: Thursday, August 28, 2025 at 11:22 AM
To: Pomerantz, Eva Marie <pomerantz@illinois.edu>
Cc: Pomerantz, Eva Marie <pomerantz@illinois.edu>
Subject: Re: Please Provide Your Support for the Establishment of the Social & Behavioral Science Institute

Hi Eva,

I strongly support elevating CSBS to institute status. There is a strong need for a campus research unit focused on this critical and broad domain of inquiry. CSBS has demonstrated it can fulfill this mission, and codifying institute status will provide a stable campus entity for this function.

Steve

Sent from my iPhone

On Aug 28, 2025, at 10:21 AM, Pomerantz, Eva Marie <pomerantz@illinois.edu> wrote:

Dear Institute Director Colleagues,

I am writing to you to ask for your support for the establishment of a permanent institute which will be called the Social & Behavioral Science Institute (SBSI) and will be housed in the Office of the Vice Chancellor for Research and Innovation



CARL R. WOESE INSTITUTE FOR GENOMIC BIOLOGY

1206 W. Gregory Drive, MC-195
Urbana, IL 61801-3609

29 August 2025

Professor Eva Pomerantz
Director, Center for Social and Behavioral Science
Campus

Dear Professor Pomerantz,

As the Director of the Carl R. Woese Institute for Genomic Biology (IGB), I write to offer my strongest support for the proposal to establish the Social & Behavioral Science Institute (SBSI) as a permanent institute within the Office of the Vice Chancellor for Research and Innovation (OVCRI).

Under your leadership, the Center for Social and Behavioral Science has been very successful in bringing together scholars and scientists from across the campus to engage in exciting interdisciplinary research on problems of great scientific and societal importance. Elevated to the level of a full-fledged institute, I know that SBSI will play an even stronger role in transforming and elevating social and behavioral science across our campus.

I also expect that SBSI will be able to better collaborate with the IGB to increase the ability of our campus to serve the state and nation with impactful research. The IGB uses cutting-edge genomic methods to solve large-scale global challenges currently facing humanity and to stimulate bio-economic development in the state of Illinois. Working together with SBSI will enhance our ability deliver on our mission.

I wish you the best with your proposal for institute status and am pleased to help support your application in any way possible.

Sincerely yours,

A handwritten signature in dark ink, appearing to read 'Gene E. Robinson', written in a cursive style.

Gene E. Robinson
Director, Carl R. Woese Institute for Genomic Biology
Swanlund Chair and Center for Advanced Study Professor of Entomology and Neuroscience

CSBS Newsletter – August 21, 2025 (sent to 1,451 individuals)

<https://emails.illinois.edu/newsletter/88/1460414888.html>

CSBS Newsletter | August 2025



Center for Social & Behavioral Science <CSBSscience@illinois.edu>
To: Koester, Brenda Davis



Thu 8/21/2025 4:13 PM



You forwarded this message on 8/21/2025 4:34 PM.

If there are problems with how this message is displayed, click here to view it in a web browser.

Click here to download pictures. To help protect your privacy, Outlook prevented automatic download of some pictures in this message.

September 29 | 8:30 am – 3:00 pm | NCSA Building, Room 6100

Machine Learning for Social and Behavioral Science Workshop

October 3 | 8:30 am – 3:00 pm | NCSA Building, Auditorium

Public Hearing: Establish the Social & Behavioral Science Institute (SBSI) as a Permanent Institute

The Senate Committee on Educational Policy is collecting information regarding a proposal to Establish the Social & Behavioral Science Institute (SBSI) as a Permanent Institute in the Office of the Vice Chancellor for Research and Innovation (OVCRI). A public hearing will be held at 12:30 p.m. on Sept. 3, 2025, on Zoom. Follow [this link](#) to get more information, RSVP to the hearing, or provide written comments.

E-Bulletin Reminder

CSBS manages a submission process for events and announcements via our monthly newsletter. Do you have a social and behavioral science seminar, event, or resource relevant to faculty researchers or their labs to promote? Use the Webtools Social and Behavioral Science E-Bulletin form to submit for inclusion in our monthly newsletter. Please note: We only accept submissions related to faculty research and lab activities, including academic seminars, research-related events, and programs.

Selected Funding Opportunities

Below you'll find a selection of funding opportunities to support your research efforts. For full eligibility details and application guidelines, please visit the linked pages. [Refer to our Funding Opportunities page](#) for additional listings and guidance to ensure your proposal meets all requirements.

Federal Funding Opportunities

NIH: Examining the Impact of Artificial Intelligence (AI) on Healthcare Safety (R18)

Deadline: September 25, 2025

NIH: Risk and Protective Factors of Family Health and Family Level Interventions (R01 Clinical Trial Optional)

Deadline: October 05, 2025

NIH: Personal Health Informatics for Delivering Actionable Insights to Individuals (R01 Clinical Trial Optional)

Deadline: October 05, 2025

Eweek Announcements – Public Forum

Illinois Faculty/Staff Notices - 8/24/2025



Eweek <ewee@illinois.edu>
To Koester, Brenda Davis



Sun 8/24/2025 9:07 AM

If there are problems with how this message is displayed, click here to view it in a web browser.

report against the criteria in the draft list. At least five students must have completed the relevant item(s), and you must have released your sections for inclusion on the list. For questions or corrections, email ices@illinois.edu or call 217-244-3846.

ICES • Center for Innovation in Teaching and Learning

This opportunity is available online.

Public Hearing: Establish the Social and Behavioral Science Institute

The Senate Committee on Educational Policy is collecting information regarding a proposal to Establish the Social and Behavioral Science Institute as a Permanent Institute in the Office of the Vice Chancellor for Research and Innovation. A public hearing will be held at 12:30 p.m. on Sept. 3, on Zoom. Follow [this link](#) to get more information, RSVP to the hearing or provide written comments.

Brenda Davis Koester • Center for Social and Behavioral Science

Illinois Faculty/Staff Notices - 8/31/2025



Eweek <ewee@illinois.edu>
To Koester, Brenda Davis



Sun 8/31/2025 9:06 AM

Flag for follow up.

If there are problems with how this message is displayed, click here to view it in a web browser.

HPC Monthly Workshop: Machine Learning and BIG DATA

NCSA is hosting the Machine Learning and Big Data workshop presented by the Pittsburgh Supercomputing Center. This workshop will focus on big data analytics and machine learning with Spark and deep learning using TensorFlow. Please note that this workshop will be held Sept. 15 and 17; there is no class Sept. 16. [Visit the event description for the agenda and information on how to register.](#)

September 15–17, 10 AM–4 PM • Central Time • NCSA Room 3000

Soham Pal • National Center for Supercomputing Applications

Public Hearing: Establish the Social and Behavioral Science Institute

The Senate Committee on Educational Policy is collecting information regarding a proposal to Establish the Social and Behavioral Science Institute as a Permanent Institute in the Office of the Vice Chancellor for Research and Innovation. A public hearing will be held at 12:30 p.m. Sept. 3, on Zoom. Follow [this link](#) to get more information, RSVP to the hearing or provide written comments.

Center for Social and Behavioral Science • Center for Social and Behavioral Science

Proposal to Establish the Social & Behavioral Science Institute (SBSI) as a Permanent Institute

Total submissions: 7

Status: running

Type: PDF Summary with Answers

Form ID: 749158879

1. Name:	Count	
	Answered	7
	Skipped	0

1. [REDACTED]
2. [REDACTED]
3. [REDACTED]
4. [REDACTED]
5. [REDACTED]
6. [REDACTED]
7. [REDACTED]

2. Title:	Count	
	Answered	5
	Skipped	2

- [REDACTED]
- [REDACTED]
- [REDACTED]
- [REDACTED]
- [REDACTED]

College/School/Unit	Count	
	Answered	5
	Skipped	2

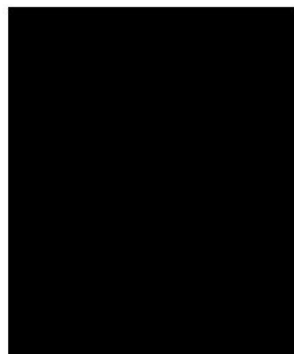
- [REDACTED]
- [REDACTED]
- [REDACTED]
- [REDACTED]

7. LAS

4. Email: Count

Answered 7

Skipped 0



5. Do you plan on attending the public hearing?

Percent

Count

Yes

No



6. The Senate Committee on Educational Policy is also collecting written comments. If you would like to leave a comment, please do so below. Note: You may leave a comment even if you do not plan on attending the public hearing. Count

Answered 2

Skipped 5

3. I strongly support this proposal. The CSBS has elevated the social and behavior sciences on our campus. This has been tremendously important for faculty recruitment and retention, and provided a valuable set of resources for faculty success.

6. The Center for Social Behavioral Sciences is a good step toward supporting social and behavioral science - I have some major concerns: 1) the focus and openness to research outside of psychology has become narrower under Eva's leadership - her background is in psychology. She and the staff don't have a breadth of knowledge of other disciplines - particularly sub-disciplines of psychology and sociology (there are so many sub-disciplines). Because they don't know what they don't know, I have observed (via pre proposal feedback) that they make assumptions and have a narrow frame of reference about what THEY consider "research" and "non-research". For example, they don't seem to understand or appreciate multi-systems level research and translational research that has the potential to create and sustain systems change in communities (isn't that social and behavioral)? Although Eva chaired the committee [REDACTED] to revise Provost's Communication #9 to create the guidelines and instructions for the Publicly Engaged Research Option (PERO) for P&T, in my view she and her staff haven't incorporated / embraced what she learned (she doesn't do publicly engaged research) PERO values, into the aims, scope and work supported of CSBS. Further, the steering committee is not as inclusive of a variety of CSBS research perspectives as it could be. They have 1 rep. from AHS (Wendy Rogers) and one from ACES (a huge College with CSBS related units - NRES, Human Nutrition & Food Science). The College of FAA is not at all represented and units like landscape

architecture, architecture, and industrial design are within the aims/scope of CSBS. College of Media doesn't seem to be represented either - they have advertising/PR etc.

Public Forum Attendees – Sept 3, 2025

Eva Pomerantz

Brenda Davis Koester

Avital Livny

Nolan Miller

Barbara Lehman

Tingting Zhang

Elizabeth Meschewski

Jessie Chin

Charee Thompson

Nathaniel Underland

Michelle Perry



Meeting Notes:

Director Eva Pomerantz gave a brief presentation about the proposal and the efforts of the unit to date.

There were three positive comments which focused on the efforts of the unit to date.

No questions or negative comments.

Public Forum Transcript

Eva Pomerantz

12:30:41 Okay, can everyone see my screen? Okay. Well, thank you for joining the open forum on the application to establish the.

12:30:52 Social behavioral science institute. Um, I appreciate you taking the time for this.

12:30:58 Um, today, the plan is that I will give a brief overview of our proposal.

12:31:04 Um, to... for the social and behavioral science institute. Um, and then I will open it up for questions and comments.

12:31:13 Um, I should highlight that this, uh, Zoom session is being recorded so that we may have a transcript to share with the Senate when they review our proposal.

12:31:24 And I think I know everybody in this meeting, but I am Eva Pomerantz, and I am the Director for the Center for Social and Behavioral Science.

12:31:33 And also a faculty member in the department. Um, psychology.

12:31:38 So, uh, we have over a thousand social and behavioral science faculty.

12:31:45 Across 30 units on this campus. Um, and you can see it's a very diverse faculty. These are just some of our.

12:31:54 Our assistant and associate professors. Who are currently affiliates.

12:32:00 Um, and so about 6 years ago, the Center for Social and Behavioral Science.

12:32:05 Was founded to not only serve these faculty, but to really.

12:32:11 Harness their social and behavioral science expertise, particularly across disciplines. To solve major social challenges.

12:32:22 Um, I think the center has been incredibly successful over these last 6 years.

12:32:27 Um, just to highlight some of our accomplishments, we have 204 affiliates.

12:32:33 Um, and they are across 35 campuses units. Uh, one of our key signature programs from the start.

12:32:42 Of the center, in fact, even before the start, in 2017, when there was a social and behavioral science initiative.

12:32:50 Um, was either small grant program in which we give faculty members.

12:32:56 Um, 30,000, it's very... it started at \$20,000, now it's \$30,000.

12:33:02 Um, to conduct research. Um, we've supported 130 researchers across 40 or more campus units.

12:33:10 Um, almost 80% of these proposals have been interdisciplinary, and they involve investigators from different disciplines.

12:33:19 Um, and the return on investment for this program in terms of external grant dollars that come from the pilot data collected.

12:33:28 Is quite high, so for every dollar we invest in this program, we get \$25 back in external funding.

12:33:37 Um, since 2019, when the center opened, and that obviously includes the pandemic when we were closed down, we've run 46 events.

12:33:46 Uh, both in person and online, and there's been over 3,000 attendees over that time.

12:33:53 Um, and I should say that, uh, we run about. I think 12 events, 12 to 16 events a year now, and the attendance has been increasing.

12:34:03 Um, in 2022, we established a policy research legislative fellows program.

12:34:09 Which places fellows in a local... which places graduate students. In a local legislator's office.

12:34:17 Um, to work on a policy research project. Um, and these are really powerful projects on a variety of topics.

12:34:27 Um, we've placed 19 student fellows across 6 legislative. Offices, and this is a bipartisan program, so they're placed in, um.

12:34:37 Local Democratic offices and local Republican offices. And then, um, finally to highlight another program that we have, it's called the Illinois Science Explorers Program. This is something that we've coordinated with other institutes across campus.

12:34:54 To use social and behavioral science principles. To bring STEM education programming to elementary school children who would otherwise not receive this kind of enrichment.

12:35:06 And this includes social behavioral science, which is often not included in.

12:35:12 Stem programming. Um, we have a great community specialist. Um, she's working with these different institutes, has delivered over 150 programs.

12:35:21 To these children, also developed STEM programming nights, um, and is running a program for graduate students to learn how to do this.

12:35:30 Um, and we've had over 2,000 attendees at the programs. So, based on our success as a center.

12:35:40 Uh, we feel that it's a wonderful time to establish ourselves as a permanent institute.

12:35:47 Um, and so our vision for what we hope will become the social and behavioral science institute.

12:35:53 Is to make our campus a national leader in harnessing social and behavioral science to solve the complex challenges.

12:36:00 Facing the world, being via innovative models of interdisciplinary research and public impact.

12:36:09 And you... and we plan to... kind of implement this vision across.

12:36:17 Five areas of impact. These are areas where we see social... where we see societal problems at social and behavioral science can solve.

12:36:26 Some of these areas, we have a lot of expertise on in our campus.

12:36:31 Um, other areas, these are places where we could build expertise. So these five areas are technology and society.

12:36:38 Health and well-being, these two areas is where most of our faculty are. We have about 50% of faculty in these.

12:36:45 Each of these two areas. Um... Institutes and organizations, about a third of our faculty fall into this area.

12:36:54 Belonging and inclusiveness, again, a third, and then environment and society is an area I think we're really establishing on this campus.

12:37:05 Okay. You may be wondering, why now? Like, why become an institute now?

12:37:12 And I will just highlight that in 2023. Uh, the Center for Social and Behavioral Science underwent our inaugural five-year review. This was a review by both internal and external evaluators.

12:37:25 And it was a very positive review, and they suggested that we go... that we move to institute status, that we become a permanent institute.

12:37:35 Um, the provost and the vice chancellor of Research and Innovation.

12:37:40 Endorse this recommendation and suggested that we undertake a strategic planning process.

12:37:47 To envision what we would look like in the future. And, for example, that's where those.

12:37:52 5 new areas come from that we would address if we were an institute.

12:37:58 Um, in terms of undertaking the strategic planning, um, we have an annual survey that our affiliates fill out, from which we gained information about.

12:38:08 Where people were doing research, what was important to them, what were the challenges they were encountering.

12:38:14 Um, we ran focus groups. Um, that were open to everyone on our campus.

12:38:22 Um, we had 3 focus groups. Um, and we consulted with.

12:38:28 Deans and institute directors across campus. This whole process was really done in collaboration and under the guidance of our steering committee, which includes.

12:38:38 12 faculty members from across campus. Um, at the end of this process.

12:38:45 We've developed a strategic plan, um, and. And submitted that to the provost and the vice chancellor of.

12:38:52 Research and innovation, who said, indeed, we were ready to move to permanent institute status.

12:38:59 And here we are, applying, uh, for permanent institute status. And you may be saying, well, why? Like, why, in fact, people ask us this. Why go from a center to an institute? Why have this institute.

12:39:14 Designation. First of all, uh, we would become a permanent unit, and.

12:39:19 We would be situated at the campus level, under the Office of the Vice Chancellor of Research and Innovation, and it's important for us to be situated at the campus level, because that is really how we.

12:39:31 Foster this research across disciplines, this collaboration across. Across disciplines, across the colleges and the units within the colleges.

12:39:40 Um, and that allows for this. Interdisciplinary approach, and this is in line with the guidance in the Provost's guidebook about.

12:39:51 Naming conventions. Um, second, becoming the Institute designation allows us to become permanent.

12:39:58 And that is not only elevating the social and behavioral sciences, but allows us to plan for the future, if we know that we're going to.

12:40:07 Exist for a good amount of time. And then you may ask, will this designation change anything? Like, are you going to get more money? Are you going to get less money?

12:40:18 Um, it's not going to change our budget, it's not going to change our staffing, um, and it won't lead to changes in our programming, our services.

12:40:26 This institute designation. Um, really is about being permanent.

12:40:31 And doesn't buy us anything in terms of... more... more funds, more... a bigger budget.

12:40:39 Okay. So, when we think about this establishing the social and behavioral science institute.

12:40:47 We really think of achieving our vision to facilitate social and behavioral science for innovative impact on our campus.

12:40:55 Um, through two halves. The first is the research hub. And that facilitates cutting-edge social and behavioral science, addressing pressing societal challenges.

12:41:05 And it capitalizes on the unique strengths across our campus for effective solutions.

12:41:11 So, for example, I think we are really. Have the set of strengths for the technology and society area.

12:41:21 Um, on our campus, and that's something we really want to capitalize on.

12:41:25 Um, and then, in terms of really making sure that our research has impact.
12:41:31 We have the Science for Society Hub, which amplifies the impact of social and behavioral science.

12:41:36 Researched by supporting investigators and using evidence-based methods to share and conduct their research with the public.

12:41:44 I think both of these hubs kind of take place. Um, in the... kind of in this network of connecting people, that that's really important, that if we want to have interdisciplinary approaches.

12:41:58 That are very powerful and have impact. We have to be connecting people, whether it's, you know.

12:42:05 Getting groups together for research projects, or having bigger convenings on particular topics, or learning about methods.

12:42:13 So just to, um, give you some example, um, programming and services that we have in our research hub.

12:42:20 I already talked about the small grant program. This program is really popular.

12:42:25 Um, in the past two semesters, we've had over 55 pre-proposals.

12:42:31 Um, each semester, and we are able to fund 4 of those proposals.

12:42:37 Uh, second, we provide proposal development services. So, when people are applying for grants, we are there to help them. Um, it might be identifying a grant, helping them.

12:42:48 To develop a checklist for what needs to be done, a timeline.

12:42:53 Um, helping them with standard parts that we can provide wording for, um.

12:42:59 Providing a full review of the grant and feedback on the grant, and even if someone on our staff can provide expertise.

12:43:07 That someone might need, for example, in qualitative research, having that person be part of the grant.

12:43:13 Um, I'd also say that this past semester, we ran an NSF Career Club.

12:43:18 Um, to help support people in, uh, preparing NSF career proposals.

12:43:24 Um, and also to create kind of a supportive peer network.

12:43:29 Um, and then finally, as I mentioned before, we run a number of topical and methodological convenings.

12:43:35 Um, that will bring people together, the topical ones bring people together around a certain issue. So, for example, gun violence is... we're having a big lecture on gun violence.

12:43:46 Um, in a couple weeks. Um, and we have, uh, methodological workshop on machine learning.

12:43:53 Um, and I don't... in a month? And we hope to follow these up with smaller kinds of AI methods.

12:44:01 Workshops coming in the future. Um, in terms of our Science for Society hub.

12:44:07 I already talked about the Illinois Science Explorers. Um, we also just established a new program called Partnerships for Evidence-Based Public Policy.

12:44:17 Um, that is really there to facilitate mid-career faculty into moving into research.

12:44:24 That they do with a partner in the government in our state, um, so that their research can have impact in terms of.

12:44:33 State policy, and they can really start to see what kind of research needs to be conducted.

12:44:39 Um, to... that policymakers are interested in. And this program is, um, in

collaboration.

12:44:48 With IGPA, so the Institute of Government and Public Affairs. Um, and then finally, when people are writing grants, we help them, um, when there's a broader impacts requirement.

12:45:00 Um, to do those. Put those broader impacts together, to find collaborators.

12:45:06 Um, write up those sections. Um, we've given workshops on broader impacts.

12:45:12 Okay, well, that is all that I have, and I'm open for questions and comments.

12:45:38 There doesn't have to be any questions and comments?

12:45:45 Well, I would just highlight, um. I... it's very exciting to see the people here, because, um, they all have had... not all, but most people here have had some connection with the.

12:45:58 Um, Center for Social and Behavioral Science. Um, so running at... undergraduate program on diversity and equity science.

12:46:09 Avital, Livni, uh, Jesse Chin was in the, um. Nsf Career Club, um, and also has used our proposal support.

12:46:20 Um, Ting Ting is in our new, uh, Partnerships for Evidence-Based Policy program.

12:46:26 Um, and Sherry. Thompson has talked at our young investigators, um.

12:46:33 One of our young investigators coffees coffees, and. And, um, Michelle often asked me to come talk with people in education. Um, so I thank you all for coming.

12:46:45 And being part of whatever we do, um, and making it better.

12:46:53 Thanks for the good work that you do. It's impressive and important, thank you.

Eva Pomerantz

12:46:57 Thank you.

Nolan Miller

12:47:00 All right, I'll just say, um, the reason why we're doing this is because the Senate, uh, bylaws say we have to, and so we want to give everyone an opportunity to express their opinions and raise any concerns they have. It's good.

12:47:12 To know that people don't have any concerns, but if you have anything that you want to, um.

12:47:17 Pass along, either use the feedback on the invitation you got, or email me directly, nmiller, and we will make sure that all the stakeholders are heard from.

Avital Livny

12:47:30 I'm just saying that one of... one of the strengths, I think, of moving to institute status as Eva said earlier, is thinking about, kind of, longer-term positioning within the university.

12:47:41 And that the university takes the social and behavioral science into consideration when it's thinking about its next long-term plan, because obviously we're not going anywhere, and that.

12:47:52 Our work is incredibly important, and um... and we're looking for support from the university as the federal landscape continues to shift for us, maybe.

12:48:02 Even more significantly than for some other fields. And so, um, I think this is an incredible opportunity, and I'm really excited to see the future of CSBS. I'm gonna have to learn the new acronym.

Brenda Koester

12:48:17 I just want to add that anyone who had submitted comments in the registration form.

12:48:22 Those will be attached to the application and shared, um, with the Senate and all the other committees reviewing the application.

Tingting Zhang

12:48:34 I think I skipped the registration part, but I just want to see, like, you know, my two cents into this whole kind of proposal.

12:48:42 I'm an assistant professor from the labor school, and I came from Canada, so when I come to UFI, like, I have no idea how to apply for grant, like, you know, let alone have time to reach out to different disciplines, and then finding collaborators, and.

12:48:57 Even for people that might share, like, a similar interests on different things.

12:49:02 So, I think I'm the, like, one of the... biggest... the beneficiaries from CSPS, because, like, the workshop that you guys run, and then the new faculty, kind of like a, you know.

12:49:15 Opportunity to... to interact and present. Collectively, and... the methodology, you know, seminars that you had invited that.

12:49:26 I think her name is Tracy, right? Come to do the qualitative research method, like, day camp, and then...

12:49:34 The evidence, the policy, kind of like a fellowship and small grant, like, I got so much from this, this... initiative, and... Still, I feel like if I need something, I would just go to CSPS.

12:49:47 So that's, like, a really, really beneficial for me, like, and I think a lot of what junior faculty like I.

12:49:54 Would really... learn so much, and again, so much... from this...

12:50:02 Institution, and... It's really important to legitimize this structure.

12:50:10 And... probably, like, I think, like.

12:50:14 I know, like, we talk about this all the time within our department, like.

12:50:19 But sometimes, like, people still kind of, like, you know, try to figure out where... what is what and where is where. So, you know, having this kind of hub and having people kind of, like, helping us.

12:50:31 To really wrinkle, like, all those challenges is gonna be incredibly helpful.

12:50:35 Yeah, thank you. Thank you. Cool, like, being there, and it... holding my hands.

Eva Pomerantz

12:50:43 We're here, thank you.

Nolan Miller

12:51:05 I think that's good if, uh... There's nothing further, we can wrap up and report back to the Senate.

Eva Pomerantz

12:51:12 Great. Thank you so much. Thank you all for taking the time to come. I really appreciate it.

Current Affiliate Listing by Name, Rank, Unit

First Name	Last Name	Title	Unit
Scott	Althaus	Professor	Political Science
Aaron	Anderson	Assistant Director	Beckman Institute
Flavia	Andrade	Professor	School of Social Work
Filza	Armadita	Visiting Senior Scientific Specialist	Illinois Sustainable Technology Center
Marc	Astacio-Palmer	Vst Coord Rsspt	Geography & GIS science
Renee	Baillargeon	Professor	Psychology
Christopher	Ball	Assistant Professor	Journalism
Joshua	Barbour	Professor	Communication
William	Barley	Associate Professor	Communication
Liza	Berdychevsky	Associate Professor	Recreation, Sport & Tourism
Howard	Berenbaum	Professor	Psychology
Suma	Bhat	Assistant Professor	Electrical & Computer Engineering
Cabral	Bigman	Associate Professor	Communication
Elisabeth	Bigsby	Associate Professor	Communication
Kelly	Bost	Professor	Human Development and Family Studies
Jake	Bowers	Professor	Political Science
D. A.	Briley	Associate Professor	Psychology
Jessica	Brinkworth	Associate Professor	Anthropology
Alaysia	Brown	Assistant Professor	Human Development and Family Studies
Robert	Bruno	Professor	Labor & Employment Relations
Paul	Bruno	Assistant Professor	Education Policy, Organization and Leadership
Tuyen	Bui	Postdoctoral Research Associate	Center for Prevention Research and Development
Teresa	Cardador	Associate Professor	School of Labor & Employment Relations
John	Caughlin	Professor	Communication
Kevin	Chang	Professor	Computer Science
Marie	Channell	Associate Professor	Speech and Hearing Science
Yuguo	Chen	Professor	Statistics

Current Affiliate Listing by Name, Rank, Unit

Jessie	Chin	Assistant Professor	Information Sciences
Chung-Yi	Chiu	Associate Professor	Health and Kinesiology
Colleen	Chiu-Shee	Assistant Professor	Urban and Regional Planning
Wojtek	Chodzko-Zajko	Professor	Latin American & Caribbean Studies
Soyoung	Choi	Assistant Professor	Health & Kinesiology
Kiel	Christianson	Professor	Educational Psychology
Alexandra	Chronopoulou	Clinical Associate Professor	Statistics
Julie	Cidell	Professor	Geography & Geographic Information Science
Kate	Clancy	Professor	Anthropology
Joe	Cohen	Associate Professor	Psychology
Flora	Cohen	Assistant Professor	School of Social Work
Jennifer	Cromley	Professor	Educational Psychology
Courtney	Cuthbertson	Assistant Professor	Human Development and Family Studies
Jacinda	Dariotis	Professor	Human Development and Family Studies
George	Deltas	Professor	Economics
Karen Tabb	Dina	Professor	School of Social Work
Travis	Dixon	Professor	Communication
Florin	Dolcos	Professor	Psychology
Sanda	Dolcos	Research Assistant Professor	Psychology
Sharon	Donovan	Professor	Nutritional Sciences
Bryan	Endres	Professor	Agricultural and Consumer Economics
Cara	Finnegan	Professor	Communication
Jodi	Flaws	Professor	Comparative Biosciences
Rachel	Garthe	Associate Professor	Social Work
Gonzalez	Gloriana	Professor	Curriculum & Instruction
Robyn	Gobin	Associate Professor	Health and Kinesiology
Holly	Golecki	Assistant Professor	Bioengineering
Melissa	Graebner	Professor	Business Administration
Andrew	Greenlee	Professor	Urban & Regional Planning

Current Affiliate Listing by Name, Rank, Unit

Pamela	Hadley	Professor	Speech & Hearing Science
Chang Dae	Ham	Professor	Advertising
Ben	Hankin	Professor	Psychology
Jen	Hardesty	Professor	Human Development and Family Studies
Judith	Havlicek	Associate Professor	School of Social Work
Wendy	Heller	Professor	Psychology
Manuel	Hernandez	Assistant Professor	Kinesiology and Community Health
Laura	Hetrick	Associate Professor	Art Education
Lisa	Hinchliffe	Affiliate Professor	University Library
Rebecca	Hinze-Pifer	Assistant Professor	Education Policy, Organization & Leadership
Tuyet Mai	Hoang	Assistant Professor	School of Social Work
Rachel	Hoopsick	Assistant Professor	Health and Kinesiology
Carla	Hunter	Professor	Psychology
Violeta	J. Rodriguez	Assistant Professor	Psychology
Gayithri	Jayathirtha	Assistant Professor	Curriculum and Instruction
Christina	Kamis (Kimberly)	Assistant Professor	Sociology
Hyojung	Kang	Assistant Professor	Curriculum and Instruction
Jina	Kang	Assistant Professor	Health and Kinesiology
Hyun-Sook	Kang	Associate Professor	Education Policy, Organization & Leadership
Jeremy	Kanter	Associate Professor	Human Development and Family Studies
Daniel S.	Katz	Chief Scientist	NCSA
Justin	Kern	Assistant Professor	Educational Psychology
Shelby	Keye	Assistant Professor	Health and Kinesiology
Marieke	Kleemans	Assistant Professor	Economics
Leanne	Knobloch	Professor	Communication
Marynia	Kolak	Assistant Professor	Geography & Geographic Information Science
Eleftheria	Kontou	Assistant Professor	Civil and Environmental Engineering
Karen	Kramer	Associate Professor	Human Development and Family Studies
Aleks	Ksiazkiewicz	Associate Professor	Political Science

Current Affiliate Listing by Name, Rank, Unit

Benedek	Kurdi	Assistant Professor	Psychology
Thomas	Kwapil	Professor	Psychology
Matt	Lambert	Professor	Special Education
Sandraluz	Lara-Cinisomo	Associate Professor	Health & Kinesiology and Community Health
Christopher	Larrison	Associate Professor	School of Social Work
Bob	Lawless	Professor	Law
Katharine	Lee	Assistant Professor	Anthropology
Kevin	Leicht	Professor	Sociology
Ben	Leitschuh	Visiting Assistant Research Scientist	Vice Chancellor Research Institutes
Amy	Leman	Assistant Professor	College of Agricultural, Consumer and Environmental Sciences
Kelley	Lemon	Assistant Professor	Landscape Architecture
Jarrett	Lewis	Assistant Professor	Educational Psychology
Tara	Leytham-Powell	Associate Professor	Social Work
Jessica	Li	Professor	Education Policy, Organization & Leadership
Robb	Lindgren	Professor	Educational Psychology
Avital	Livny	Associate Professor	Political Science
Michael	Lotspeich-Yadao	Research Assistant Professor	Health & Kinesiology
Denise	Loyd	Professor	Business Administration
Angela	Lyons	Associate Professor	Agricultural and Consumer Economics
Rachel	Magee	Assistant Professor	Information Sciences
Aixa	Marchand	Assistant Professor	Educational Psychology
Giselle	Martinez Negrette	Assistant Professor	Curriculum & Instruction
Ewa	Maslowska	Associate Professor	Advertising
Erica	Mason	Assistant Professor	Special Education
Reuben	May	Professor	Sociology
Jason	Mazzone	Professor	Law
Kate	McDowell	Associate Professor	School of Information Sciences

Current Affiliate Listing by Name, Rank, Unit

Nancy	McElwain	Research Professor	Human Development and Family Studies
Shannon	Mejia	Associate Professor	Health, Technology, and Aging
Ruby	Mendenhall	Professor	Sociology
Andrea	Miller	Clinical Assistant Professor	Psychology
Jeffery	Mondak	Professor	Political Science
Jessica	Montag	Assistant Professor	Psychology
Silvina	Montrul	Professor	Spanish and Portuguese
Ellen	Moodie	Associate Professor	Anthropology
Chrystalla	Mouza	Professor	College of Education
Raksha	Mudar	Professor	Speech & Hearing Science
Sean	Mullen	Associate Professor	Health & Kinesiology
Eunmi	Mun	Associate Professor	Labor and Employment Relations
Chris	Napolitano	Associate Professor	Educational Psychology
Jennifer	Nelson	Assistant Professor	Education Policy, Organization and Leadership
Margaret	Ng	Associate Professor	Journalism
Cleo	O'Brien-Udry	Assistant Professor	Political Science
Melissa	Ocepek	Assistant Professor	Information Sciences
Brian	Ogolsky	Professor	Human Development and Family Studies
Adam	Osman	Associate Professor	Economics
Benjamin	Osswald	Assistant Professor	Accountancy
Grace	Park	Clinical Associate Professor	Biomedical and Translational Sciences
M. Yanina	Pepino	Associate Professor	Food Science & Human Nutrition
Omar	Perez Figueroa	Assistant Professor	Urban and Regional Planning
Mary	Pietrowicz	Health Innovation Professor	Supercomputing Applications
Mina	Raj	Assistant Professor	Health and Kinesiology
Vimal	Rao	Teaching Assistant Professor	Statistics
Kaylin	Ratner	Assistant Professor	Educational Psychology
Michel	Regenwetter	Professor	Psychology
Crystal	Reinhart	Senior Research Scientist	School of Social Work

Current Affiliate Listing by Name, Rank, Unit

Aric	Rindfleisch	Professor	Business Administration
Michael	Rizzo	Assistant Professor	Psychology
Jennifer	Robbennolt	Professor	Law
Brent	Roberts	Professor	Psychology
Rachel	Roegman	Associate Professor	Education Policy, Organization and Leadership
Wendy	Rogers	Professor	Health and Kinesiology
Karen	Rudolph	Professor	Psychology
Josie	Rudolphi	Assistant Professor	Agricultural & Biological Engineering
Nidia	Ruedas-Gracia	Assistant Professor	Educational Psychology
Madelyn	Sanfilippo	Assistant Professor	School of Information Science
Mikihiro	Sato	Assistant Professor	Recreation, Sport and Tourism
Will	Schneider	Associate Professor	School of Social Work
Michele	Schutz	Assistant Professor	Special Education
Andi	Schwingel	Associate Professor	Health and Kinesiology
Eleanor	Seaton	Professor	Psychology
Emerson	Sebastiao	Assistant Professor	Health and Kinesiology
JooYoung	Seo	Assistant Professor	School of Information Sciences
Laura	Shackelford	Professor	Anthropology
Daniel	Simons	Professor	Psychology
Shardé	Smith	Associate Professor	Human Development and Family Studies
Rebecca	Smith	Associate Professor	Pathobiology
Bobby	Smith II	Associate Professor	African American Studies
Lena	Song	Assistant Professor	Economics
Chadly	Stern	Associate Professor	Psychology
Ashlynn	Stillwell	Associate Professor	Civil and Environmental Engineering
David	Strauser	Professor	Health and Kinesiology
Rebecca	Stumpf	Professor	Anthropology
Leona Yi-Fan	Su	Associate Professor	Advertising

Current Affiliate Listing by Name, Rank, Unit

Meicen	Sun	Assistant Professor	School of Information Sciences
Hari	Sundaram	Professor	Siebel School of Computing & Data Science
Mania	Taher	Assistant Professor	School of Art and Design
Kevin	Tan	Associate Professor	School of Social Work
Harsh	Taneja	Associate Professor	Advertising
Rafael	Tassitano	Assistant Professor	Health and Kinesiology
David	Tewksbury	Professor	Communication
Charee	Thompson	Associate Professor	Communication
Damir	Torrico	Assistant Professor	Food Science and Human Nutrition
Cassandra	Troy	Assistant Professor	Journalism
Kelly	Tu	Associate Professor	Human Development and Family Studies
Matthew	Turk	Assistant Professor	School of Information Science
Carena	van Riper	Associate Professor	Natural Resources & Environmental Science
Cortney	VanHook	Assistant Professor	Social Work
Patrick	Vargas	Professor	Advertising
Ryan	Wade	Assistant Professor	Social Work
Dong	Wang	Associate Professor	School of Information Sciences
Shaowen	Wang	Professor	Geography & Geographic Information Science
Andrew	Weaver	Associate Professor	School of Labor and Employment Relations
Nora	Webb Williams	Assistant Professor	Political Science
Rachel	Whitaker	Professor	Microbiology
Liliane	Windsor	Professor	Social Work
Matt	Winters	Professor	Political Science
Kevin	Wise	Professor	Advertising
Ann-Perry	Witmer	Lecturer	Agricultural and Biological Engineering
Cara	Wong	Professor	Political Science
Chi-Fang	Wu	Professor	School of Social Work
Shihan	Xie	Assistant Professor	Economics
Yilan	Xu	Associate Professor	Agricultural and Consumer Economics
Xun	Yan	Associate Professor	Linguistics
JungHwan	Yang	Assistant Professor	Communication

Current Affiliate Listing by Name, Rank, Unit

Yujeong	Yang	Assistant Professor	Political Science
Mike	Yao	Professor	Institute of Communications Research
Oscar	Ybarra	Professor	Business Administration
Hoyoung	Yoo	Assistant Professor	Economics
Min	Zhan	Professor	School of Social Work
Susu	Zhang	Assistant Professor	Psychology

[Click here to see this online](#)



Center for Social & Behavioral Science

Vote on Proposal to Establish the Social & Behavioral Science Institute (SBSI) as a Permanent Institute - CSBS Affiliates

As a current affiliate of the **Center for Social & Behavioral Science** (CSBS), you are being asked to vote on the establishment of a permanent institute which will be called the **Social & Behavioral Science Institute** (SBSI) and will be housed in the Office of the Vice Chancellor for Research and Innovation (OVCRI).

This vote will only take 2 minutes of your time but is an important part of the process! Voting will be available until the end of the day on September 4, 2025.

Access the Vote [HERE](#)

Why are you undertaking this designation now? Based on CSBS's 5-year inaugural review and the subsequent strategic planning process, in which many of you participated and provided input, the Vice Chancellor of Research and Innovation (VCRI) and Provost recommended a move to permanent institute status.

Will this change any programs or services currently offered by CSBS? No, there will be no changes to programming or services as a result of moving to permanent institute status. It also will not change the current CSBS budget or staffing levels.

Why are we using “institute” instead of “center”? This change complies with the naming convention guidance by the [Office of the Provost](#) to reflect that we are situated at the campus-level and involve faculty and staff from a range of academic disciplines.

Who will review this? The proposal for the establishment of SBSI will be reviewed and approved by the VCRI, the Provost, the Urbana Senate, the Board of Trustees, and the Illinois Board of Higher Education for full board review.

Is my vote anonymous and confidential? Yes, your vote and any comments will be anonymous and confidential.

Who will get the results of this vote? The aggregate results of this vote and comments will be part of the formal proposal.



Center for Social & Behavioral Science

University of Illinois

3102 NCSA | MC-257 | 1205 W. Clark St. | Urbana, IL 61801

CSBScience@illinois.edu | [subscribe to e-newsletters](#)



Vote on Proposal to Establish the Social & Behavioral Science Institute (SBSI) as a Permanent Institute - CSBS Affiliates

Total submissions: 141

Status: running

Type: PDF Summary with Answers

Form ID: 1602403527

1. Please select one:	Percent	Count
Yes, I support CSBS's move to permanent institute status.	100%	141
No, I do not support CSBS's move to permanent institute status.	0%	0

2. Is there anything you would like to tell us?	Count	
	Answered	19
	Skipped	122

13. Exciting! I understand that my vote is confidential but I will be looking out for ways to support the institute!

25. Thank you for all your support and opportunities to connect.

32. I would be happy to see the center elevated to the level of stature it deserves, both as a topic area and as an organization that cuts across so many academic disciplines.

37. N/A

46. I fully support this move.

54. Great idea!

56. Glad to see this happening!

67. no

72. Keep up the great work!

77. about time...

78. Broaden the CSBS beyond its very implicit association with psychology

83. Excited for this new development and look forward to continue to connect with the institute.

91. I think it increases the visibility of CSBS at the university and for other collaborators/ stakeholders.

112. Everyone at CSBS does such incredible work -- thank you for all that you do!

113. Thank you

127. *Thank you for your continued effort to bring this vision to fruition.*

135. *Having a permanent institute dedicated to the study of social issues will hopefully mean, down the road, more resources to address these issues and better and more impactful social-sciences research at our University.*

139. *I think that CSBS does important work on campus.*

141. *Thank you for reaching out.*

Affiliate Feedback from 2025 Annual Survey

Is there anything else you want to tell us?.

- Thank you for the amazing work you do!
- Thanks!
- Thank you.
- Thank you for the opportunity to become an affiliate member of CSBS. I look forward to engaging with the community.
- Thank you for continuing to bring folks together and design important and innovative programming for affiliates. Appreciate the work of all CSBS staff!
- Thank you for all you do.
- Thank you for all your hard work!
- Thank you so much for everything you do. It's incredibly helpful for early-career faculty such as myself.
- Thank you for continuing the work of CSBS, even when budgets are lean.
- Thank you for all that you do at CSBS! I love collaborating with CSBS staff!
- Thank you for your continuing leadership efforts!
- Thank you for doing this.
- No, but thank you for all that CSBS does to support pre-tenure scholars.
- I'm looking forward to engaging in discussions and exploring opportunities to collaborate with other CSBS affiliates. Thank you for providing these opportunities!
- Thank you.
- Thank you for providing a support system for faculty who conduct research related to the social and behavioral sciences.
- Thank you for your continued support of this excellent initiative.
- I love the CSBS workshops with external speakers held at iHotel, always informative!
- I really find CSBS to be a supportive institution on this campus. Keep up the great work!
- I have had a great experience as a CSBS Affiliate. I look forward to continuing engagement and learning opportunities.
- Not right now. Keep up with the good work.
- I value the programming of CSBS and look forward to future opportunities to engage.
- I appreciate this work and the CSBS. I think having difficult conversations about the changing shape of academic work and how to balance the previously established benchmarks of academic work with the increasingly uncertain academic work infrastructure.

- You are doing a great job! I really appreciate the direction of the CSBS and the transparent communication. I look forward to becoming more involved.
- I appreciate the opportunity to be affiliated with CSBS!
- I am excited to be an affiliate.
- I look forward to learning from and contributing to the CSBS community.
- I am looking forward to collaborating with a multidisciplinary team in food and consumer behavior-related matters.
- The efforts CSBS have made to bring researchers together from across campus around timely themes and support junior faculty as well as interdisciplinary research is much appreciated!
- I appreciate the opportunity to be a CSBS affiliate.
- It's wonderful to have the opportunity to collaborate through CSBS, and glad that you are now in the NCSA building.

Steering Committee Members

Name	Department/Unit, College
Flavia Andrade	Social Work, School of Social Work
Brian Ogolsky	Human Development & Family Studies, College of Agriculture, Consumer, and Environmental Sciences
Mike Yao	Advertising, College of Media
Renee Baillargeon	Psychology, College of Liberal Arts & Sciences
Jennifer Robbennolt	Law, College of Law
Wendy Rogers	Health & Kinesiology, College of Applied Health Sciences
Reuben A. Buford May	Sociology, College of Liberal Arts & Sciences
George Deltas	Economics, College of Liberal Arts & Sciences
Gloriana Gonzalez	Curriculum & Instruction, College of Education
Shaowen Wang	Geography & GIS, College of Liberal Arts & Sciences
Cara Finnegan	Communication, College of Liberal Arts & Sciences
Oscar Ybarra	Business Administration, Geis College of Business

[Click here to see this online](#)



Center for Social & Behavioral Science

Vote on Proposal to Establish the Social & Behavioral Science Institute (SBSI) as a Permanent Institute - CSBS 24-25 Steering Committee

As a member of the 24-25 Steering Committee of the **Center for Social & Behavioral Science** (CSBS), you are being asked to vote on the establishment of a permanent institute which will be called the **Social & Behavioral Science Institute** (SBSI) and will be housed in the Office of the Vice Chancellor for Research and Innovation (OVCRI).

***This vote will only take 2 minutes of your time but is an important part of the process!** Voting will be available until the end of the day on September 4, 2025. As both a CSBS Affiliate and a member of the 24-25 Steering Committee you will be asked to vote twice (as an affiliate and a steering committee member).*

Access the Vote [HERE](#)

Why are you undertaking this designation now? Based on CSBS's 5-year inaugural review and the subsequent strategic planning process, in which many of you participated and provided

input, the Vice Chancellor of Research and Innovation (VCRI) and Provost recommended a move to permanent institute status.

Will this change any programs or services currently offered by CSBS? No, there will be no changes to programming or services as a result of moving to permanent institute status. It also will not change the current CSBS budget or staffing levels.

Why are we using “institute” instead of “center”? This change complies with the naming convention guidance by the [Office of the Provost](#) to reflect that we are situated at the campus-level and involve faculty and staff from a range of academic disciplines.

Who will review this? The proposal for the establishment of SBSI will be reviewed and approved by the VCRI, the Provost, the Urbana Senate, the Board of Trustees, and the Illinois Board of Higher Education for full board review.

Is my vote anonymous and confidential? Yes, your vote and any comments will be anonymous and confidential.

Who will get the results of this vote? The aggregate results of this vote and comments will be part of the formal proposal.



Center for Social & Behavioral Science

University of Illinois

3102 NCSA | MC-257 | 1205 W. Clark St. | Urbana, IL 61801

CSBScience@illinois.edu | [subscribe to e-newsletters](#)



CSBS 24-25 Steering Committee Vote on Proposal to Establish the Social & Behavioral Science Institute (SBSI) as a Permanent Institute

Total submissions: 8

Status: running

Type: PDF Summary with Answers

Form ID: 62143161

1. Please select one:	Percent	Count
Yes, I support CSBS's move to permanent institute status.	100%	8
No, I do not support CSBS's move to permanent institute status.	0%	0

2. Is there anything you would like to tell us?	Count	
	Answered	2
	Skipped	6

4. Thanks for all the work you've done in the past few years!

8. In these troubled times, having a strong Institute dedicated to the study of societal issues seems more important than ever.

Response to the Questions from the Educational Policy Committee

How does the Center/Institute work to ensure that the steering committee is representative of the broad range of social science research on campus?

- The CSBS [Steering Committee](#) is comprised of 12 full professors from units across campus with consideration to the distribution and breadth of social and behavioral scientists in different units (e.g., more members come from LAS than other colleges not only because LAS has the most social and behavioral scientists, but also because there is the most diversity of social and behavioral science in LAS). Each member serves a three-year term, with the exact units and numbers of representatives changing to some extent as members rotate on and off.
- The CSBS Director supplements the representation on the Steering Committee by meeting at least annually with each dean of every college or school on the Illinois campus to discuss CSBS activities along with how CSBS can better bring value to their unit and opportunities for collaboration. (Only one unit has not been responsive to meeting invitations, likely due to the unit's very few researchers with interests relevant to social and behavioral science.)

Does the Center/Institute view supporting publicly engaged research as part of its mission (i.e., extension-like activities), or is its focus on more traditional academic research?

- A key strategic direction for CSBS is to amplify the impact of social and behavioral science research via evidence-based public engagement and research-practice partnerships that bridge science and society.
- Three of CSBS's programs that fall under public engagement (for details, see [here](#)) are in line with the campus [definition](#) of public engagement in that they have been developed and are maintained in collaboration with our public partners to benefit the public. We also sought substantial input from Illinois faculty and staff with relevant expertise in designing each of these programs.
- Through the Science & Society Initiative, CSBS aids researchers in developing broader impacts activities. This often includes facilitating the development of partnerships with the public. Principles from our campus public engagement definition guide our work when working with researchers in this context.